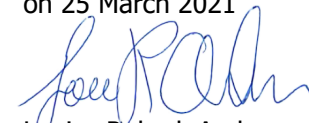


**Nets A/S**

# Annual Report 2020

Adopted at the Annual General Meeting  
on 25 March 2021

A handwritten signature in blue ink, appearing to read 'Louise Rubæk Andersen'.

Louise Rubæk Andersen  
*Chair of the meeting*

# Financial Summary\*

EURm	2020	2019	2018	2017	2016
<b>Income statement</b>					
Revenue, net	720.4	747.3	731.7	1,037.7	993.1
EBITDA before special items	275.2	295.0	266.0	380.9	352.2
EBITDA	142.1	198.0	147.2	346.8	270.7
Special items	(133.1)	(97.0)	(82.8)	(25.0)	(46.4)
Special items - costs related to takeover offer and delisting	-	-	(36.0)	(9.1)	(35.1)
Adjusted EBIT	175.7	215.7	197.8	322.3	296.3
EBIT	(15.7)	56.6	14.9	201.7	126.8
Result from continuing operations	6.4	(28.1)	(31.7)	163.6	(78.5)
Result from discontinuing operations	61.5	60.3	72.9	-	-
<b>Financial position</b>					
Total assets	4,470.0	4,037.7	3,836.3	4,062.7	3,806.5
Goodwill	1,691.4	1,360.8	1,946.9	1,959.9	1,980.0
Clearing-related balances, net	(115.7)	(103.2)	55.1	(80.9)	(88.5)
Own cash	65.4	32.0	99.0	18.8	94.6
Net interest-bearing debt	1,366.9	994.5	909.7	1,021.1	1,143.8
Equity	1,386.1	1,522.6	1,462.5	1,430.7	1,319.0
<b>Cash flow</b>					
Net cash from operating activities excl. clearing related balances	180.8	210.9	191.9	270.7	(92.3)
Change in clearing related balances	11.7	109.7	(136.0)	(7.5)	(16.1)
Net cash from investing activities	(528.4)	(216.9)	(87.0)	(151.0)	9.0
Net cash from financing activities	390.2	(15.2)	(5.2)	(236.2)	28.5
Net cash flow for the year	54.3	88.5	(36.3)	(124.0)	(70.9)
Net change in own cash	33.4	(67.0)	80.4	(75.6)	(111.5)
Operating free cash flow	82.0	76.9	62.2	232.2	192.8

EURm	2020	2019	2018	2017	2016
<b>Growth in revenue, net</b>					
Reported	(3.6%)	2.1%	(1.8%)	4.6%	8.0%
Organic	(4%)	1%	0%	5%	7%
<b>Capital structure</b>					
Net interest-bearing debt/EBITDA before special items	5.0x	3.4x	3.4x	2.7x	3.2x
<b>Other ratios</b>					
EBITDA before special items margin	38.2%	39.5%	36.4%	36.7%	35.5%
Capital expenditure/Revenue	24.9%	14.9%	12.0%	8.6%	9.0%
Capitalised development costs (EBITDA before special items impact)/Revenue	7.4%	7.0%	6.5%	4.1%	3.9%
Cash conversion ratio	63%	66%	70%	70%	78%
Equity ratio	31.0%	37.7%	38.1%	35.2%	34.7%
<b>Year-end number of employees, full time equivalent</b>					
	2,902	2,460	2,179	2,454	2,427

\* For 2018 income statement numbers have been re-stated as the Group's account-to-account payment business is presented as discontinuing operations. In the income statement result after tax from discontinuing operations is presented in a separate line with comparison numbers. In 2019 and 2020 also assets and liabilities related to discontinuing operations are presented in separate lines as held-for-sale. Net cash flow from discontinuing operations is presented in a Note to the financial statements. Figures from 2016-2017 have not been restated.

## Performance highlights

2020 was a defining year for Nets where we delivered on our ambitious transformation plan to create a leading and preferred payments partner for merchants and issuers in Europe. This was driven by our continued focus on growth and profit accretive acquisitions especially within eCom and SME merchant services, new customer wins, integration synergies and solid cost control. Ultimately, in Q4, we reached a new milestone in our transformation journey, as the Nets Group entered into a binding merger agreement with Italy-based PayTech leader Nexi.

In 2020, we continued our European expansion with focus on the high growth areas of eCom and SMEs in mainly Poland and Finland. In Q1, we made a large acquisition in Poland of high growth merchant acquirer Polskie ePłatności (PeP) that closed in October after receipt of all customary approvals. Following the earlier Polish acquisitions of Dotpay/eCard and Przelewy24 in the eCom space, the acquisition of PeP - being focused on SME merchants and having a strong presence in the card acceptance and point-of-sales terminals space - has a

convincing strategic fit, completing our offering to Polish merchants. Further, we made new acquisitions in Finland, where Finnish software developer Poplatek and its spin-off company Poplapay were brought into the Nets family while Checkout Finland Oy was acquired a few days into 2021, thereby strengthening both our payment terminal services and our eCom capabilities.

Throughout the year, we continued to win several new customers in our Issuer & eSecurity Services business, where we welcomed Ikano Bank and Yoba as new Nets customers. We also announced that we have joined the European Payments Initiative (EPI) as one of the first non-bank acquirers with a view to expanding the EPI's acceptance network, and sharing the ambition to create a new, unified, innovative pan-European payment solution.

In November, the Nets Group and Nexi, the PayTech leader in Italy, entered into a binding framework agreement regarding the combination of the two groups through an all-share merger. Closing of the merger, which is expected in Q2 2021, is subject to conditions in the framework agreement and customary approvals from authorities as well as the completion of the sale of Nets' Corporate Services to Mastercard. Upon closing of the merger and following the subsequent anticipated merger with SIA, the new combined group encompassing Nexi, Nets and

SIA will become the European PayTech leader with the scale, reach and breadth of capabilities to drive the digital and cashless transition in Europe.

In August, the European Commission gave its conditional approval of the sale of our account-to-account payment business to Mastercard. The divestment comprises a major line of business whose activities and cash flows can be clearly distinguished, operationally and for financial reporting purposes, from the other business areas. Consequently, in the annual accounts for 2020, the account-to-account business is presented as a discontinuing operation in line with the reporting for 2019. In March 2021, the transaction was completed, and Nets received the full amount of the sales price of EUR 2.85 billion in cash.

2020 was a year in which the COVID-19 pandemic made significant impacts on the payments industry in midst of cancellations, restrictions and lockdowns. While causing a temporary drop in the number of payment transactions, the COVID-19 pandemic also sparked a positive acceleration of the digitalisation trend throughout the regions where the Nets Group is active, with substitution effects from cash to digital payments and in particular contactless and remote payments. Nevertheless, as European Governments introduced new restrictions towards the end of

2020, we will most likely need for restrictions to be lifted and a return to normal circumstances, before these effects start driving up transaction volumes.

## Performance highlights (continued)

### REVENUE

In 2020, net revenue was EUR 720,4 million, down 3.6% compared to 2019

Merchant Services delivered strong growth in eCommerce business (high-20s) in 2020 following (i) very strong merchant and revenue growth of Easy next-gen collecting one-click PSP proposition in the Nordics (ii) strong growth in attractive Poland eCom region driven by shift to online and market share expansion on the back of successful P24/DotPay/eCard integration.

SME remained resilient despite acquiring volumes negatively impacted by COVID-19: Nordics SME showed strong resilience with modest volume impact from COVID-19 and strong Q3 rebound. SME Poland continued strong volume and revenue growth despite base volumes negatively affected by COVID-19 lockdowns.

LAKA revenue declined due to COVID-19 impacting volumes within travel, transport and hospitality slightly offset by volume increases in supermarkets.

As a result, organic growth declined by 4.6% in 2020.

Issuer & eSecurity Services underlying growth declined 4.3% confirmed resilience during 2020 following a robust growth in Digital business experiencing volume and fee expansion, slightly

offset by a decline in Issuer business on the back of COVID-19 related volume drop.

The Nets Group will continue to strengthen the commercialization of the business with a clear-cut focus on driving commercial and product excellence to create an easier tomorrow for our customers and their customers.

### OPERATING EXPENSES

Total operating expenses were EUR 445.2 million compared to EUR 452.3 million in 2019, a decrease of 1.6%. The total cost to net revenue increased by 1.3 percentage point to 61.8% from 60.5% in 2019.

Cost of sales was EUR 40.6 million (5.6% of net revenue), compared to EUR 38.2 million in 2019. The increase was mainly driven by a strong performance in the eCommerce business.

External expenses amounted to EUR 180.1 million (25.0% of net revenue) compared to EUR 181.4 million in 2019 (24.3% of net revenue), the decrease compared to 2019, was driven by execution of savings and transformation initiatives during 2020, offset by increase from costs from acquired entities and full year effect of 2019 acquisitions.

Staff costs amounted to EUR 224.3 million (31.5% of net revenue) compared to EUR 232.8 million in 2019 (31.2% of net revenue).

The decrease in staff costs was primarily driven by solid execution of savings and transformation initiatives during 2020.

Nets had 2,902 FTEs (full-time equivalent) by the end of 2020, which is 442 more than in 2019. The increase is driven by acquisitions to further strengthen the Group's European presence driving an increase of 710 FTE. The increase was offset by 286 FTE as a result of savings and transformation initiatives improving the Group's competitiveness.

### EBITDA B.S.I.

In 2020, EBITDA b.s.i. decreased by 6.7% to EUR 275.2 million, compared to EUR 295.0 million in 2019.

The decline in EBITDA b.s.i. reflects a 2020 with unprecedented decline in volume and net revenue following the COVID-19 lockdowns in our key markets.

### SPECIAL ITEMS

In 2020, special items amounted to EUR 133.1 million, an increase of EUR 36.1 million compared to 2019. In 2020, investment in transformation programs continued and amounted to EUR 41.6 million (2019: EUR 45.6 million). Costs associated with business setups, acquisitions and disposals amounted to EUR 33.7 million (2019: EUR 28.2 million) and costs related to re-organization, restructuring and refurbish-

ment was EUR 24.4 million (2019: EUR 23.2 million). Cost arising from one-off losses, etc. amounted to EUR 33.4 million (in 2019: EUR 0.0 million) and primarily included losses related to one implementation project and provisions to cover for one COVID-19 related Merchant Service credit risk.

### EBITDA

In 2020, EBITDA amounted to EUR 142.1 million, compared to EUR 198.0 million in 2019.

### DEPRECIATION AND AMORTISATION

In 2020, underlying depreciation and amortisation were EUR 99.5 million, up from EUR 79.3 million in 2019. The increase of EUR 20.2 million was primarily due to completed software development and depreciations from new acquisitions and investments in tangibles.

Amortisation of business combination and impairment losses amounted to EUR 58.3 million compared to EUR 62.1 million in 2019. The decrease is mainly due to significant assets being fully amortised during the year partly offset by the acquisitions, of PeP Group and amortisations of the related purchase price allocations.

### ADJUSTED EBIT

Adjusted EBIT calculated as EBITDA b.s.i. minus underlying depreciation and amortisation was EUR 175.7 million, compared to EUR 215.7 million in 2019.

## Performance highlights (continued)

### NET FINANCIALS

Net financials were an income of EUR 6.0 million, compared to an expense of EUR 66.6 million in 2019. The development of positive EUR 72.6 million, was primarily due to a positive impact from foreign exchange adjustment of EUR 52.3 million, opposite 2019 foreign exchange loss of EUR 12.9 million.

### TAX

In 2020, taxes amounted to an income of EUR 16,3 million compared to an expense of EUR 18,1 million in 2019, equivalent to an effective tax rate of 124,4% in 2020 (180,7% in 2019).

The effective tax rate was positive impacted by foreign exchange rate differences with a tax value of EUR 13 million, re-assessment of utilisation of tax losses in Norway, partly offset by non-deductible M&A cost.

### RESULT FOR THE YEAR

Result for the year was EUR 68.1 million, compared to EUR 32.2 million in 2019. The result for 2020 was significantly impacted by Special items, including continued investments in transformation programmes and M&A activities, other one-off losses, amortizations from business combinations, and improved financial items and income taxes.

Result from discontinued operations was EUR 61.5 million, in line with EUR 60.3 million, in 2019

### BALANCE SHEET AND CASH FLOW

#### Tangible and intangible assets

At 31 December 2020, total assets amounted to EUR 4,470.0 million, compared to EUR 4,037.7 million at year-end 2019. Total non-current assets amounted to EUR 2,399.0 million compared to EUR 1,994.4 million at year-end 2019, impacted by increase in Goodwill and other intangibles, related to acquisitions.

Total current assets amounted to EUR 2,071.0 million, compared to EUR 2,043.3 million at year-end 2019.

#### CLEARING WORKING CAPITAL

At 31 December 2020, clearing-related assets (clearing debtors) amounted to EUR 461.8 million and clearing-related liabilities amounted to EUR 577.5 million, leading to a clearing working capital (CWC) of negative EUR 115.7 million (positive funding).

#### EQUITY

Total equity was EUR 1,386.1 million compared to EUR 1,522.6 million at the beginning of the year, and was negatively impacted by value adjustments of Other liabilities.

### BORROWINGS & INTEREST-BEARING LOANS TO SHAREHOLDERS

As of 31 December 2020, borrowings amounted to EUR 1,423.2 million, compared to EUR 1,014.3 million end of 2019. The increase was mainly a result of new acquisitions and related refinancing of "takeover" external debt in total EUR 395.3 million.

Proceeds from the sale of the account-to-account activities have not been reflected in total borrowings and are expected to have a significant positive impact on the leverage of the Group.

### CASH FLOW

In 2020, net cash flow from operating activities, excluding clearing working capital, was by EUR 180.8 million, compared to EUR 210.9 million in 2019.

In 2020, the operating cash flow was negatively impacted by Special items, as described in the section Special items. Adjusted for non-recurring items, cash flow from operating activities positive by EUR 313.9 million, compared to EUR 307.9 million in 2019.

Cash flow from investments was EUR 528.4 million, whereof acquisitions amounted to EUR 355.5 million. Investments in development projects and other intangibles amounted to EUR 163.9 million (2019: EUR 85.6 million), including new card processing platform in Issuer and eSecurity Services and a number of new payment solutions within the Merchant Service business.

Net cash in-flow from financing activities in 2020, excluding clearing-related balances, amounted to EUR 390.2 million, and included new borrowings to fund acquisitions and related costs, as well as the continue investments in transformation of the business. Realization of derivatives contributed positive funds with EUR 12.5 million. Repayment of finance lease liabilities amounted to EUR 19.1 million (2019: EUR 19.1 million).

## Performance highlights (continued)

### OUTLOOK 2021

In 2020, we saw that the COVID-19 pandemic made a significant impact on the payments industry in midst of cancellations, restrictions and lockdowns causing a significant drop in the number of payment transactions performed. Assuming a gradual recovery and return to normal circumstances beginning of Q2 2021, Nets expects a year with higher revenue and increasing EBITDA before special items margins. Nets will continue to streamline operations and processes and invest in innovative solutions with an ambition to create value for our customers, partners and shareholders, and deliver on stability, security and integrity to build the future of Nets.

### EVENTS AFTER THE BALANCE SHEET DATE

In January 2021, Nets announced the acquisitions of Finnish eCommerce company Checkout Finland Oy. The acquisition is subject to customary approvals by the Finnish authorities.

In March 2021, the sale of Nets' account-to-account payment business to Mastercard for EUR 2.85 billion was completed upon receipt of all regulatory approvals and fulfilment of all customary closing conditions.

## Business model\*: For an easier tomorrow

We create value for our customers by delivering digital payments and related services that are used by over 740,000 merchant outlets and more than 250 banks and other issuers of payment cards in Europe, allowing our customers to service millions of European consumers. We see easier products and solutions as the foundation for growth and progress – both in commerce and in society.

Whether it's for buying groceries, shopping safely on mobiles or dealing with public authorities, online services offer greater convenience and free up time in people's everyday lives.

Nets' products and services are integrated parts of everyday life for many European banks, businesses and consumers. We provide a secure and frictionless payment experience, among other facilities, to our customers and their end users. Yet the reality behind this seemingly simple exchange of services is a complex web of processes initiated by a digital transaction such as a payment or an authentication.

\*Business model for Nets Topco 2 Group

This means that we invest in, maintain and operate a considerable number of payment platforms in Europe, domestic debit card schemes in Denmark and Norway, and e-identity solutions. Security, stability and high performance are thus top priorities for our business.

As one of the largest digital payment service providers in Europe, Nets operates a deeply entrenched network which connects merchants, financial institutions, public services and consumers, enabling them to make and receive payments, identify themselves, and use value-added services based on data and analytics.

Nets offers several digital payment services. We enable digital payments across major channels – in brick-and-mortar stores, e-commerce and via mobile devices. We offer merchant acquiring solutions, point-of-sale (POS) terminals and e-commerce directly to merchants across Europe, while other services such as payments processing are offered in close co-operation with financial institutions, and the Danish national e-identity scheme NemID and its successor MitID are offered in close co-operation with public authorities and the banking community. In Denmark, we own Dankort, while in Norway, we process BankAxept card services on behalf of and in close co-operation with our customers.

To expand our leading position as a one-stop payment shop for merchants and a strong

provider of processing services for banks across Europe, we have divested our low growth account-based payments unit almost solely focussed on Danish and Norwegian customers and centred our activities around two distinct business units – Merchant Services and Issuer & eSecurity Services. This allows us to address our customers' needs even better, while at the same time benefitting from synergies related to security, stability and scale that come from operating integrated end-to-end platforms.

Today, the Nets Group enjoys a diversified European presence with business activities in more than 20 European countries, and we hold a fundamentally enhanced exposure to the high growth segments of eCom and SME merchant services as well as the high growth areas of Poland and DACH region, where digital means of payments are rapidly replacing cash. Further, tapping into the significant growth pool for digital payments, we are selectively investing in the rapidly growing eCom space and the SME segment through more refined product offering as well as bolt-on acquisitions.

### **MERCHANT SERVICES**

Merchant Services provides our merchant customers with payment acceptance solutions across channels (in-store, online and mobile) and with the broadest range of payment methods and brands in Europe, including Visa, MasterCard, JCB, Diners, Discover, American

Express, Union Pay, Alipay, Apple Pay, Google Pay, Samsung Pay and local payment brands. In recent years, Merchant Services has presented strong growth based on solid organic growth rates and targeted acquisitions in the under-penetrated DACH region Poland with a particular focus on the high growth eCom space and the SME segment.

Merchant Services manages and simplifies merchants' payment flows. We enable merchants to accept payments easily and without friction, regardless of channels, to receive the settlement in their bank account, and to get detailed reconciliation information and statistics, all in different currencies and frequencies depending on the merchants' needs and their customers' preferences. In Poland we enable merchants to accept local payment methods such as Pay-By-Link bank payments and BLIK mobile payments. In the Nordic countries, Nets 360 offers a smooth omnichannel shopping experience by connecting all touchpoints, centring around the customer's preferred payment methods, while the newly introduced NetsPay 2.0 provides the SME segment with a flexible solution combining core and individually selected value-added services.

We also offer merchants value-added service for electronic receipts and loyalty solutions, all with a simple and fast setup. Further, in Denmark, we own and operate Dankort, the

## Business model\*: For an easier tomorrow (continued)

domestic debit card system. Acquiring revenue is primarily driven by transaction fees. Terminal revenues are primarily monthly subscription fees for POS terminals or revenues from sold POS devices. Our e-commerce business generates both transaction fees and monthly fees, while the revenue model for Dankort is primarily transaction-based.

### ISSUER & ESECURITY SERVICES

Issuer & eSecurity Services provides payment processing services and value-added services for issuers of payment cards (primarily banks) as well as e-security and digitalisation services for the private and public sectors.

The issuer services include complete end-to-end service and full lifecycle management of cards from both international and domestic card schemes. Besides being a card processor for issuers in Europe, Issuer & eSecurity Services offers complementary services such as Account Management Services (AMS), Risk Management Services (Fraud & Dispute Solutions) and Data & Analytics. The business also processes the

domestic debit card systems in Denmark and Norway, which are branded Dankort and Bank-Axcept respectively.

The e-security and digitalisation services include delivery of e-security solutions mainly through NemID and BankID, and digitalisation services enabling customers to simplify workflows and processes and supporting customers in their digital transformation.

The revenue model for Issuer & eSecurity Services is primarily transaction-based combined with additional volume-related fees for additional services.

### CORPORATE SERVICES

Corporate Services include clearing and instant payment services, as well as e-billing solutions, e.g. Betalingservice in Denmark and AvtaleGiro/eFaktura in Norway. In August, the European Commission gave its conditional approval of the sale of our account-to-account payment business to Mastercard, and the transaction was completed in March 2021.

## Risk management

Risk management is an integral part of the way we work and helps us understand and manage the uncertainties inherent in our strategy and day-to-day business operations.

Nets operates in a payments industry with constant technological advances, evolving customer behaviour and changing regulatory agendas, where prudent risk management is vital to support the achievement of strategic and operational objectives. At Nets, risk management is therefore anchored in the organisation and reinforced by continuous risk processes. To support management awareness and oversight and thus enabling risk-based decision making, Nets maintains an enterprise risk landscape that is discussed with Business Units and Group Functions and reported to the Executive Management.

This section describes Nets' key risks in relation to achieving business objectives. Financial risks are described under Financial Statements, sections 2, 3 and 5.

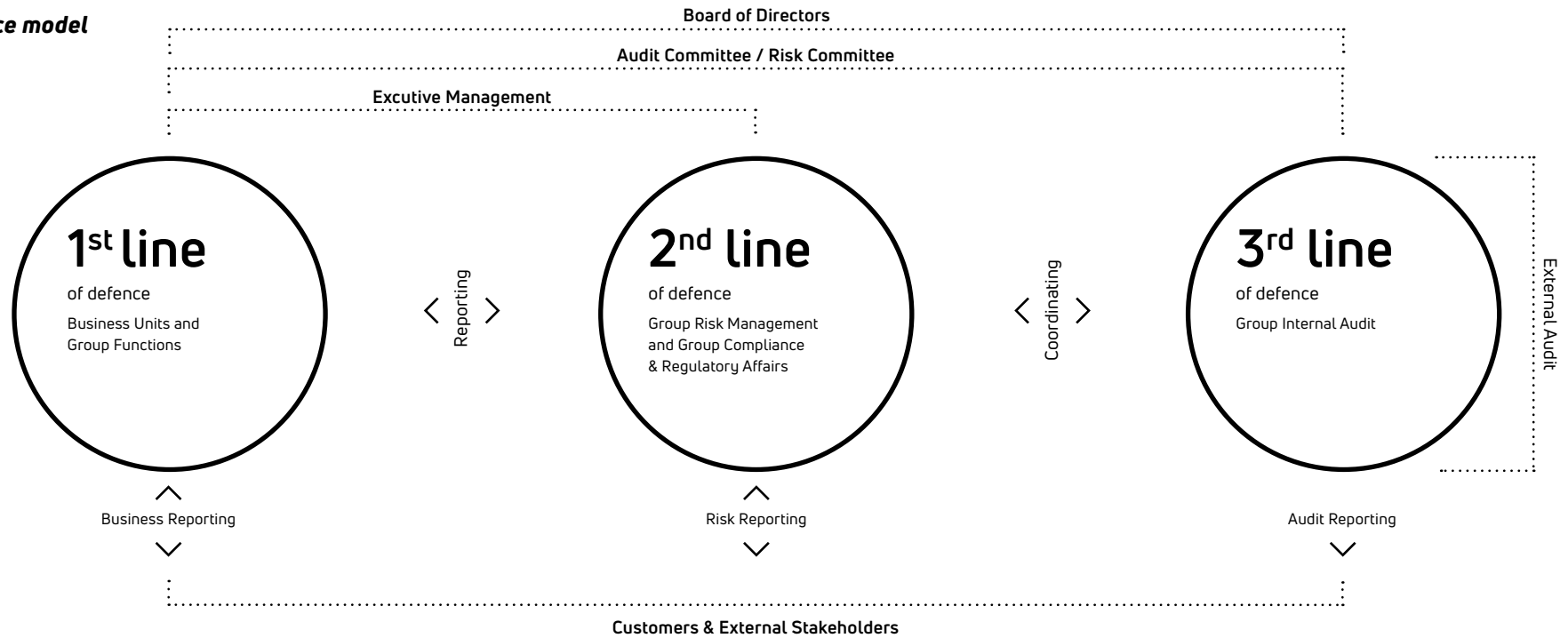
### RISK GOVERNANCE

The Board of Directors is responsible for the overall governance, oversees the enterprise risk landscape and approves strategies and group-wide policies. The Board of Directors has appointed an Audit Committee and a Risk Committee, which, among other tasks, monitor the group-wide enterprise risk landscape and compliance with board-approved policy objectives.

A "three lines of defence" model has been implemented throughout the organisation and is used to structure roles, responsibilities and accountability concerning risk and internal controls.



**Governance model**



**FIRST LINE OF DEFENCE**

**– Identify, assess and manage risks**

The Business Units and Group Functions form the first line of defence and perform the day-to-day risk-bearing activities. They are responsible for identifying, assessing and treating risks within those activities.

**SECOND LINE OF DEFENCE**

**– Oversight, control and compliance**

Group Risk Management, Group Security, IT Risk & Compliance and Group Compliance & Regulatory constitute the second line of defence and act independently of the activities they are tasked with controlling. They provide oversight and compliance by setting out minimum requirements through policies and support the implementation and monitoring of these policies through frameworks, tools, processes and control activities, enabling group-wide risk and compliance management.

**THIRD LINE OF DEFENCE**

**– Independent assurance**

Group Internal Audit and external auditors form the third line of defence. The third line provides independent assurance concerning the risk and control functions performed by the first and second lines of defence.

## Key risks

The risks described are a high-level summary of the result of risk assessments across Nets. Top management reviews, discusses, challenges and provides feedback on the enterprise-wide risk landscape reporting and, when necessary, directs risk mitigating actions. The risks are not listed in particular order of priority and the selected mitigations are non-exhaustive.

### INDUSTRY AND MARKET TRANSFORMATION

#### Description

Underlying market transformation from cash to digital payments supported by technological developments, regulatory changes and new market participants are impacting consumer behaviour. The payments eco-system is developing at a fast pace, and market participants must evolve with it if they want to be part of the underlying market growth.

#### Potential impact

Failing to adapt to the changing industry and market dynamics can lead to loss of business and may have an impact on our reputation.

#### Main mitigants

- Strengthening the European value proposition to better serve merchants.
- Modernising applications and further embedding agile ways of working to strengthen product development.
- Integrating subsidiaries and optimising the operating model to further strengthen our ability to deliver enhanced products and superior customer service.
- Consolidating our technological landscape to improve customer experience and cost efficiency.

### INFORMATION SECURITY

#### Description

Every day, Nets processes and stores large amounts of data related to the processing of financial transactions, connecting merchants, financial institutions, corporate customers and consumers, and enabling them to make and receive digital payments. Nets operates across the payments value chain from payment capture and authorisation through to processing, clearing and settlement. Due to the high value of such information assets and their systemic importance to several national financial infrastructures, Nets faces a range of threats from different threat agents such as hackers, organised crime and even nation states. Relevant security threats include social engineering such as phishing and spear-phishing, hacking, supply chain attacks as well as the introduction

of system malware or ransomware that make data unreadable.

#### Potential impact

At worst, the above-mentioned security threats could lead to system downtime, compromise of critical IT systems, potential breaches of confidential information or misuse of payment information. Similarly, the loss or otherwise unauthorised or accidental disclosure of personal customer information or other sensitive information could result in regulatory or legal sanctions and/or fines, substantial remediation costs and a weakening of our corporate brand and reputation.

#### Main mitigants

- A strong security culture and continuous awareness campaigns towards all employees and contractors, including regular nano-learnings within selected security areas (such as phishing, malware, password protection, personal data protection), internal posters, intranet articles, the Nets Security Academy and simulated phishing e-mail campaigns.
- Protection measures such as a multi-layered security architecture, including intrusion prevention and detection, advanced end-point protection, privileged identity management, network segmentation, encryption of data, etc.
- Comprehensive detection capabilities through security logging, monitoring, alerting and dashboards.

- Strong and well-functioning vulnerability and patch management processes.
- Automated take-down of phishing sites pre-tending to be related to Nets services.
- Robust and documented handling of prioritised security incidents at Nets, including data breach management and communication processes.

### STABILITY AND OPERATIONS

#### Description

Nets operates a considerable number of critical payment and identity platforms throughout Europe, such as domestic debit card schemes and direct debit solutions, clearing systems, digital authentication schemes and payment processing platforms. As these platforms are critical for the broader society as well as for our customers, government organisations and authorities, ensuring platform stability has a very high priority at Nets. Potential risk causes include insufficient application deployment and testing processes, incident management issues, failing infrastructure components, data centre transitions or Distributed Denial of Service (DDoS) attacks – both at Nets and at the suppliers involved in delivering the services.

#### Potential impact

Any unscheduled platform downtime would impact the availability of our services, potentially causing Service Level Agreement (SLA) breaches, loss of business revenue and increased

## Key risks (continued)

operating expenses. In addition, Nets could suffer reputational damage in case of prolonged or repeated downtime incidents.

### Main mitigants

- Agreed and accepted policy for which versions of hardware and software are accepted and which versions are desired, accompanied by processes to monitor the lifecycle of hardware and software.
- Nets reference architecture providing a common set of principles, framework and taxonomy for Nets' technology architecture.
- Firm procedures for incident, change and problem management.
- Strong business continuity and disaster recovery governance and regular testing of core components (crisis management, platform disaster recovery plans, physical security etc.).
- Services run out of data centres with best-in-class network and infrastructure set-ups.
- Regular service risk assessments and business impact analyses to ensure service maturity and resilience.

### MERCHANT SERVICE CREDIT RISK

#### Description

Credit risk is broadly defined as the risk that a financial loss will be incurred if a counterparty (merchant, consumer, bank, supplier) does not fulfil its financial obligations. Most significant is the risk arising from merchants in case the

merchant is not able or willing to deliver the prepaid goods or services to their customers due to e.g. insolvency or fraud, the customer's bank will charge-back the amount from Nets, who will claim the amount from the merchant. If this proves unsuccessful, Nets will bear the loss.

### Potential impact

Financial losses from chargebacks that cannot be transferred to a merchant, or from consumers, due to their inability to pay or due to fraud.

### Main mitigants

- Strong contractual terms and conditions that provide deferral, collateral information and termination rights.
- Revised risk appetite for deferred delivery merchants (travel, airline, cruise lines, lodging).
- Improved risk assessment for new merchants and monitoring of existing merchants.
- Prefunding of refunds, bank guarantees, deposits in pledged bank accounts.
- Robust transaction monitoring systems and processes.

### COVID-19

#### Description

The COVID-19 pandemic continues to affect societies across the world. It has forced regional and national lockdowns for periods of time, which are negatively impacting businesses and societies. The main areas impacted for Nets are:

*Business continuity* – Governmental instructions for working from home, concerns for personnel safety and other measures have, within a short period of time, imposed a vast need to manage continued business operations securely and stably from remote distances and through new ways of working.

#### *Merchant acquiring credit risk exposure* –

Restrictions related to COVID-19 particularly impact the pre-payments segments, e.g. airlines, travel, lodging, etc., which are part of Nets' merchant portfolio.

*Revenue* – The payments industry generates revenue from transaction volumes. Regional and national lockdowns have reduced payment activities, negatively impacting transaction volumes and therefore revenue.

### Potential impact

Regional and national restrictions can lead to decreasing transaction volumes and put burdens on merchants, which ultimately may lead to merchant insolvencies, in turn resulting in lower revenue and financial losses.

COVID-19 puts additional pressure on stable operations. This is covered in the "Stability and operations" section.

### Main mitigants

- Activation of the Crisis Management Plan and a cross-functional task force through daily and later weekly meetings to continuously monitor and report on the situation and assess the need for further precautions, while working closely with International SOS for expert advice.
- For all major IT services and IT systems, measures have been put in place to ensure robust and stable operations, including all critical activities and associated teams.
- We are in close contact with major operational suppliers to check that appropriate measures are taken to ensure stable operations.
- The potential risk from merchant defaults, particularly in the travel industry, is significantly mitigated through a number of measures, including but not limited to pre-funding, guarantees, termination rights etc. The work is managed by a dedicated workforce that continues to monitor and manage the risk.

## Key risks (continued)

### REGULATORY ENVIRONMENT

#### Description

As Nets expands geographically, it is becoming subject to laws and regulations in new jurisdictions in which it operates as well as in existing markets. The Payment Service Directive (PSD2), the General Data Protection Regulation (GDPR) and the Anti Money Laundry / Combating the Financing of Terrorism (AML/CFT) legislation are examples of requirements where Nets is investing time and resources to maintain adherence across the company.

#### Potential impact

A lack of regulatory compliance may potentially result in recommendations and fines from local regulators or central banks. In addition, Nets may suffer reputational damage in case of data breaches, facilitation of money laundering, late implementation of new regulatory requirements etc.

#### Main mitigants

- Establishment of a Group compliance framework by developing and implementing Group policies in the key regulatory areas of PSD2, GDPR and AML/CFT.
- Establishment of a Group DPO function to support and co-ordinate the GDPR second line responsibilities and the DPOs across Nets.
- Establishment of a Group reporting and monitoring role to support and mature the continued Group compliance reporting covering PSD2, GDPR and AML/CTF.

Close dialogues with the Danish FSA to close findings related to inspection in the Summer of 2020.

## Corporate governance

### MANAGEMENT STRUCTURE

Nets A/S is a company within the overall holding company structure of the Nets Group, with a Board of Directors consisting of the relevant management representatives.

The Board of Directors of Nets A/S consists of four members elected by the General Meeting. According to the Articles of Association, the Board of Directors must consist of at least three and not more than eight members elected by the General Meeting. Each member is elected for a one-year term, and members may be re-elected.

The Executive Management of Nets A/S consists of the CEO. According to the Articles of Association, the Executive Management must consist of one to three members.

The Executive Committee is responsible for overseeing the daily operation of the Nets Group and consists of six members.

# Corporate Social Responsibility

## CORPORATE SOCIAL RESPONSIBILITY

This statutory statement on corporate social responsibility (CSR) – cf. sections 99a and 99b of the Danish Financial Statements Act – covers the financial period from 1 January to 31 December 2020.

## CSR AT NETS

Our approach to CSR is based on a recognition of the multiple social, environmental and economic impacts that Nets has on society through the digitalisation of the countries in which we operate. As a signatory to the UN Global Compact we are committed to implementing the international principles for responsible business conduct in our CSR policy and associated policies.

Our impact stems from increasing digital payments, running services related to digital identities, digitalising paper-based processes, and ensuring that modern societies function in a safe and efficient manner within the broader area of digital payments, for the benefit of citizens and businesses alike.

We base our work on a CSR framework, which consists of three strategic pillars and a number of policies:

1. "Driving digitalisation" is based on our commitment to provide easy and secure payment solutions to all.

2. "Responsible operations" is based on our commitment to ensure responsible business conduct throughout our value chain.
3. "Responsible employer" is based on our commitment to respect human rights and the well-being and development of our employees.

## Important CSR achievements

In 2020, key activities and achievements included, but were not limited to:

- Developing support to employees on how to stay healthy and safe while working from home during the COVID-19 pandemic.
- Supporting customers with solutions during lockdown and providing relevant payment data to decision-makers.
- Establishing a new methodology for a strengthened data collection process in order to provide more systematic environmental, social and governance data.
- Decision to become carbon neutral in Norway and relocation to new energy-optimised premises in Sweden.

## DRIVING DIGITALISATION IN A RESPONSIBLE MANNER

We are committed to delivering digital solutions that drive the development towards a digitalised, paperless, and cashless society, contributing to a significant reduction of negative social, economic, and environmental impacts in society. We want to ensure that the digitisation of socie-

## CSR framework



ty is based on services and products that bring social, environmental, and economic benefits to society, businesses, and end-users.

### Simplicity and digital inclusion

In 2020, we have focused on helping societies and customers struggling to cope with the challenges caused by the COVID-19 pandemic. When physical stores closed during the lockdowns, we rapidly offered assistance to merchants, helping them to go online to sell their services and

goods, offering new online customers services free of charge for a three-month period at a time when many merchants struggled with negative cash flows.

While causing a temporary drop in the number of payment transactions, the COVID-19 pandemic further fuelled the transition towards digital and cashless societies, and solutions developed or supported by Nets have increasingly been adopted to make the everyday lives of

end-users still smarter and easier. The number of contactless transactions in physical stores skyrocketed amid the pandemic, as did e-com, the use of electronic identification solutions, and mobile-enabled solutions supported by Nets.

We proactively reached out to public authorities to provide valuable payment data insights. This allowed authorities and decision-makers to compare infection rates with levels of economic activity and make sound decisions with regard to reinforcement or lifting of restrictions.

### Security and stability

In 2020, we continued to harvest the fruits of our fraud prevention measures, allowing customers and end-users to pay securely. At a time when fraud attempts are at an all-time high, Nets has brought fraud prevention to new heights using deep machine learning and building strong predictive algorithms for detecting fraudulent behaviour. In addition, two-factor authentication for e-com, contactless (pin-less) transactions in POS, and collaborations with the police have all contributed positively to reduce fraud, and we have now more than halved payments fraud since 2018, measured by basis points. Such efforts and results help reinforce the confidence in digital payments throughout societies.

## ENVIRONMENTAL PERFORMANCE

	2020*	2019	Comments
Reduction in CO <sub>2</sub> emissions from travel between locations	N/A	2,993 tonnes of CO <sub>2</sub> saved	2020 came with a travel ban due to COVID-19 that rendered reduction reporting and yearly comparisons meaningless
Reduction in energy consumption	Energy consumption reduced by 2% compared to 2019	Energy consumption reduced by 3,5% compared to 2018	2020 resulted in a continued decrease for the third consecutive year. In total, energy consumption has been reduced by more than 25% since 2014, exceeding the target of a 15% reduction in 2020 compared to 2014.
Amount of unsorted waste	218 tonnes of unsorted waste	238 tonnes of unsorted waste	Reflecting the impact of COVID-19 and a widespread practise of working from home throughout the year, our waste amounts declined by 8%.
Paper consumption	1.2m sheets – a 33% reduction compared to 2019	1.8m sheets – a 14% reduction compared to 2018	In total, paper consumption has been reduced by 84% since 2014, significantly exceeding the target of a 15% reduction in 2020 compared to 2014.

\* The data comprises the Nordic activities as we establish a new unified methodology for measuring and calculating across newly acquired units.

## RESPONSIBLE OPERATIONS

We aim to run our business in an environmentally conscious manner and to act with integrity. We support a preventive approach to environmental challenges, and we are committed to set reduction targets for our operations and work with our business partners and suppliers to ensure environmentally friendly business solutions across the value chain.

### Climate and environment

We support a preventive approach to environmental challenges, and we are committed to being an environmentally conscious service provider and partner to our suppliers and business partners, throughout our organisation. Our environmental policy includes commitments and targets for reducing travel-related CO2 emissions, reducing electricity consumption, increasing the use of renewable energy, reducing the use of paper as well as sorting and reducing waste.

In 2020, partly due to COVID-19 and travel restrictions as well as working from home, we saw significant improvements in our environmental performance. As we hopefully return to more normal ways of operating during the course of 2021, we expect the overall environmental performance to deteriorate, although it will continue to benefit from new and refurbished en-

ergy-efficient office buildings in Stockholm and Copenhagen and continuous efforts to reduce our environmental footprint. In 2020, we also decided to become carbon neutral in Norway.

### Responsible sourcing

Nets is committed to ensuring that we have responsible supplier relationships. To this end, our Supplier Code of Conduct specifies our commitment to comply with human and labour rights and environmental and ethical standards.

In 2020, as part of the procurement process, we began implementing a Group-wide tool for processing contract management and engaging with suppliers. In addition to the CSR risk assessment of suppliers and the supplier self-assessment programme, we have introduced supplier sustainability self-assessment for all new suppliers to strengthen the due diligence process.

### Anti-Bribery and Corruption

Nets has a zero-tolerance policy on bribery and corruption, and we condemn it in all its forms. Together with our Ethical Policy, our Anti-Bribery and Corruption Policy conveys this stance to ensure that our employees act with integrity and do not engage in any actions involving corruption and/or bribery.

To ensure that all employees are aware of the rules with which they must comply, we have set the target that all employees receive adequate annual training with a response rate above 75%.

Following the adoption of the updated Anti-Bribery and Corruption Policy in 2020, it has been decided to develop a dedicated Anti-Bribery and Corruption risk assessment, and an updated training programme for all employees has been rolled out with a completion rate at year end of 77,4%.

### Whistleblower scheme

Nets' whistleblower scheme continues to be in effect, allowing employees, the Executive Management, the Board of Directors and external stakeholders to report violations or misconduct, or suspicions of this. Customers, vendors, consultants and other external parties can report under the whistleblower scheme through our website. Any reports received are investigated by an external law firm.

No reports have led to investigations in 2020. An updated Group whistleblower policy with supplementary training is planned for 2021 and will support the strong and independent whistleblower scheme across Nets.

## RESPONSIBLE EMPLOYER

Our overall aim is to be a responsible employer and provide a secure workplace and an encouraging working environment. Our framework is guided by the United Nations' Declaration of Human Rights and the ILO Declaration on Fundamental Principles and Rights at Work. Nets' Human and Labour Rights Policy provides a standard for how to promote human rights, including not discriminating when hiring and speaking up if an employee experiences discriminating behaviour.

### Engaged and employable employees

We are committed to ensuring that our employees continuously increase their "employability" through continuous development and a good working environment and by adding new competencies throughout their careers in Nets. We believe in experience-based learning and expect leaders to check-in with their employees frequently. This is measured through our engagement and pulse surveys. Further, we measure to what extent our employees feel they can learn and grow. We will continue to focus on this in 2021.

To gather feedback from employees across the organisation, Nets conducts a yearly Engagement Survey and two Pulse Surveys through which employees can make their voices heard. In 2020, 83% employees responded to the yearly Engagement Survey showing a strong

commitment to make Nets a better place to work. In May, the Yearly Engagement index was measured at 70/100 which is satisfactory given the circumstances around remote working due to the COVID-19 pandemic. In addition to the engagement surveys a yearly Leadership Effectiveness Survey was conducted in November showing a satisfactory leadership effectiveness index of 83/100.

### **Ethical behaviour and healthy company culture**

Nets is a key player in the digital payment ecosystem, and therefore it is imperative that we ensure that every decision we make is both ethically sound and responsible. At Nets, our values lie at the core of everything we do, and Nets' Ethical Policy is based on our core values, summarised as ACT (Accountable, Customer-driven, Together).

In 2020, Nets adopted a policy for a healthy company culture. The policy identifies risk areas that may prove to be obstacles to ensuring a sound company culture and provides principles for and examples of acceptable and non-acceptable behaviour. The policy strongly encourages employees to speak up if they experience behaviour or actions that go against the policy. Every employee must be familiar with the policy, and new training of employees is planned for 2021.

### **DIVERSITY**

Nets regards diversity as an important prerequisite for operating a healthy and forward-looking company. Nets aspires to be an attractive workplace for all current and future employees. We aim to offer employment on an equal basis, ensuring that all our colleagues have equal opportunities to promote their careers in the company, regardless of their nationality, ethnicity, disability, age, gender, sexual orientation, religion, or belief.

It is important for Nets that our executives have the right skillset, irrespective of gender. When filling management positions, Nets strives to broaden the field of candidates as much as possible, to give men and women equal opportunities. In addition, requirements to external recruitment agencies include gender diversity measures to promote a healthy diversity split.

The Board of Directors of Nets A/S has set the following targets for the boards in questions:

- At least two female members of the Board of Directors of Nets A/S, corresponding to 50%
- At least one female member of the Board of Directors of Nets Denmark A/S, corresponding to 25%

At the end of 2020, we have met these targets.

The Board of Directors of Nets A/S has set the following targets for the gender composition of managers in Nets A/S and Nets Denmark A/S:

- By the end of 2026, a minimum of 35% of managers must be women.
- By the end of 2029, a minimum of 40% of managers must be women, which will mean that women will no longer be underrepresented.

Today, the percentage of female managers is 28%, which will drop to 24% once the sale of our account-to-account payment business to Mastercard is completed. Therefore, in 2020, we have decided to establish a Diversity Board with sponsorship from Management. The Board will include representatives from across the European organisation and advise Management on specific actions needed to promote the underrepresented employee groups. Further, a women's network will be established in 2021 to increase the number of female managers throughout the organisation.

### **Working environment**

We respect and prioritise the well-being of our employees across locations and countries, and we strive to create the best possible physical and psychological working environment by providing a non-discriminatory, safe, and healthy workplace for all. We also focus on preventing

work-related illness. Our aim is to ensure that all our employees have a healthy work-life balance and can reconcile the demands of working life and family life.

Nets has provided support to employees during the COVID-19 pandemic to enable them to work from home. This includes guidelines and tools for how to cope with the situation, as well as office equipment and IT equipment. The Nets COVID Crisis Team has met on a regular basis to monitor the impact of the pandemic on Nets business, enable fast decision-making when needed, and update our communication to our employees.

To monitor the well-being of employees during the COVID-19 pandemic, specific questions have been added to the yearly Engagement Survey and the two Pulse Surveys. The feedback from employees show that they feel supported while working remotely, are in close contact with their leaders, know what is expected of them, and receive feedback on their performance. The results of the Surveys are in the mid-80 range for the COVID-19 related questions using a 100-point scale. This is satisfactory.

In 2020, we saw a drop in the number of employees taking days of work due to illness. The number went down from 3.2% in 2019 to 2.1% in 2020.



## ASSESSMENT OF OUR CSR-RELATED RISKS

We work to minimise the risks and have collected them in the following five categories:

### Negative impact on the environment and climate

In general, Nets' products and services are about digitalising processes and replacing paper and thereby also reducing our carbon footprint. However, we operate out of office buildings which consume energy, and we depend on data warehouses that can contribute to a high energy consumption if they are not monitored and managed correctly. We have established an internal environmental management system which focuses on the areas we consider most relevant for our business, and we have established reduction targets and monitor and evaluate the developments on an annual basis.

### Risk of negative impact on human rights

In parallel with our European expansion, we have seen a growth in the number of suppliers to Nets. This increases the risk that we could indirectly become complicit in abuse of human and labour rights, which could lead to fines, customer loss, and a damaged reputation. As a signatory to UN Global Compact, we are

committed to actively ensuring that human and labour rights are protected and respected throughout our supply chain. We have therefore strengthened our procurement set-up and aim to reduce the number of suppliers to Nets. At the same time, we have a process for responsible procurement whereby we ask our suppliers to sign and adhere to our Code of Conduct. We also introduced Supplier Sustainability Self-Assessment for all new suppliers in 2020. We monitor suppliers by asking a selected group of suppliers to provide self-assessments, while others are monitored through on-site audits.

### Risk of negative impact on labour rights

There is a risk that our employees are discriminated against or are not thriving at work. Therefore, we are committed to promoting a healthy workplace with focus on the physical and psychological working environment. We have policies and training tools in place and follow developments closely in this area. We also monitor employee satisfaction through Engagement Surveys conducted throughout Nets.

### Risk of being associated with corruption

Nets is growing and enlarging its geographical footprint to cover more European countries, and we recognise that there is an increasing

risk of becoming exposed to corrupt activities. As a signatory to the UN Global Compact, we are committed to actively combating corruption in all its forms. We train all employees in our ethical policy and Anti-Bribery and Corruption Policy through mandatory e-learning. We run the training regularly to ensure that our employees do not become complicit in irresponsible and unethical activities. We also have a whistleblower scheme that gives our employees and external stakeholders the opportunity to report cases.

### Misapplication of customer data

Every day, Nets processes and stores large amounts of data related to the processing of financial transactions between millions of accounts in multiple countries. We recognise the risk we pose to society if our core products and services are not up and running. To boost customer confidence and instil customer trust, we have put comprehensive programmes in place to protect consumer and customer privacy, and we continuously work to improve the resilience of our systems and platforms and increase awareness of cybersecurity and information security internally and among our stakeholders.

# Statement by the Board of Directors and Executive Management

**The Board of Directors and the Executive Management have today discussed and approved the Annual Report of Nets A/S for the financial year 2020.**

We recommend that the Annual Report be approved at the Annual General Meeting on 25 March 2021.

The consolidated financial statements have been prepared in accordance with International Financial Reporting Standards as adopted by the European Union and further requirements according to the Danish Financial Statements Act. The financial statements of the Parent Company have been prepared in accordance with the Danish Financial Statements Act.

Ballerup, 25 March 2021

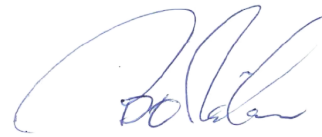
It is our opinion that the consolidated financial statements and the Parent Company financial statements give a true and fair view of the Group's and the Parent Company's financial position at 31 December 2020, the results of the Group and Parent Company's operations and the Group's consolidated cash flows for the financial year 1 January – 31 December 2020.

## Executive Management



**Dorthe Rosenkilde Saunders**  
CEO

## Board of Directors



**Bo Nilsson**  
Chairman



**Klaus Pedersen**  
Vice Chairman

In our opinion, the Management Review includes a true and fair account of the development in the Group's operations and financial conditions, the results for the year, cash flows and financial position as well as a description of the most significant risks and uncertainty factors that the Group and the Parent Company face.



**Pia Ingrid Jørgensen**



**Dorthe Rosenkilde Saunders**

# Independent auditor's report

## TO THE SHAREHOLDERS OF NETS A/S Opinion

In our opinion, the Consolidated Financial Statements give a true and fair view of the Group's financial position at 31 December 2020 and of the results of the Group's operations and cash flows for the financial year 1 January to 31 December 2020 in accordance with International Financial Reporting Standards as adopted by the EU and further requirements in the Danish Financial Statements Act.

Moreover, in our opinion, the Parent Company Financial Statements give a true and fair view of the Parent Company's financial position at 31 December 2020 and of the results of the Parent Company's operations for the financial year 1 January to 31 December 2020 in accordance with the Danish Financial Statements Act.

We have audited the Consolidated Financial Statements and the Parent Company Financial Statements of Nets A/S for the financial year 1 January - 31 December 2020, which comprise income statement, balance sheet, statement of changes in equity and notes, including a summary of significant accounting policies, for both the Group and the Parent Company, as well as statement of comprehensive income and cash flow statement for the Group ("financial statements").

## Basis for Opinion

We conducted our audit in accordance with International Standards on Auditing (ISAs) and the additional requirements applicable in Denmark. Our responsibilities under those standards and requirements are further described in the Auditor's Responsibilities for the Audit of the Financial Statements section of our report. We are independent of the Group in accordance with the International Ethics Standards Board for Accountants' Code of Ethics for Professional Accountants (IESBA Code) and the additional requirements applicable in Denmark, and we have fulfilled our other ethical responsibilities in accordance with these requirements. We believe that the audit evidence we have obtained is sufficient and appropriate to provide a basis for our opinion.

## STATEMENT ON MANAGEMENT'S REVIEW

Management is responsible for Management's Review.

Our opinion on the financial statements does not cover Management's Review, and we do not express any form of assurance conclusion thereon.

In connection with our audit of the financial statements, our responsibility is to read Management's Review and, in doing so, consider whether Management's Review is materially

inconsistent with the financial statements or our knowledge obtained during the audit, or otherwise appears to be materially misstated.

Moreover, it is our responsibility to consider whether Management's Review provides the information required under the Danish Financial Statements Act.

Based on the work we have performed, in our view, Management's Review is in accordance with the Consolidated Financial Statements and the Parent Company Financial Statements and has been prepared in accordance with the requirements of the Danish Financial Statements Act. We did not identify any material misstatement in Management's Review.

## MANAGEMENT'S RESPONSIBILITIES FOR THE FINANCIAL STATEMENTS

Management is responsible for the preparation of Consolidated Financial Statements that give a true and fair view in accordance with International Financial Reporting Standards as adopted by the EU and further requirements in the Danish Financial Statements Act and for the preparation of Parent Company Financial Statements that give a true and fair view in accordance with the Danish Financial Statements Act, and for such internal control as Management determines is necessary to enable the preparation of financial statements that are free from material misstatement, whether due to fraud or error.

In preparing the financial statements, Management is responsible for assessing the Group's and the Parent Company's ability to continue as a going concern, disclosing, as applicable, matters related to going concern and using the going concern basis of accounting in preparing the financial statements unless Management either intends to liquidate the Group or the Parent Company or to cease operations, or has no realistic alternative but to do so.

## AUDITOR'S RESPONSIBILITIES FOR THE AUDIT OF THE FINANCIAL STATEMENTS

Our objectives are to obtain reasonable assurance about whether the financial statements as a whole are free from material misstatement, whether due to fraud or error, and to issue an auditor's report that includes our opinion. Reasonable assurance is a high level of assurance, but is not a guarantee that an audit conducted in accordance with ISAs and the additional requirements applicable in Denmark will always detect a material misstatement when it exists. Misstatements can arise from fraud or error and are considered material if, individually or in the aggregate, they could reasonably be expected to influence the economic decisions of users taken on the basis of these financial statements.

## Independent auditor's report (continued)

As part of an audit conducted in accordance with ISAs and the additional requirements applicable in Denmark, we exercise professional judgement and maintain professional skepticism throughout the audit. We also:

- Identify and assess the risks of material misstatement of the financial statements, whether due to fraud or error, design and perform audit procedures responsive to those risks, and obtain audit evidence that is sufficient and appropriate to provide a basis for our opinion. The risk of not detecting a material misstatement resulting from fraud is higher than for one resulting from error as fraud may involve collusion, forgery, intentional omissions, misrepresentations, or the overriding of internal control.
- Obtain an understanding of internal control relevant to the audit in order to design audit procedures that are appropriate in the circumstances, but not for the purpose of expressing an opinion on the effectiveness of the Group's and the Parent Company's internal control.
- Evaluate the appropriateness of accounting policies used and the reasonableness of accounting estimates and related disclosures made by Management.
- Conclude on the appropriateness of Management's use of the going concern basis of accounting in preparing the financial statements and, based on the audit evidence obtained, whether a material uncertainty exists related to events or conditions that may cast significant doubt on the Group's and the Parent Company's ability to continue as a going concern. If we conclude that a material uncertainty exists, we are required to draw attention in our auditor's report to the related disclosures in the financial statements or, if such disclosures are inadequate, to modify our opinion. Our conclusions are based on the audit evidence obtained up to the date of our auditor's report. However, future events or conditions may cause the Group and the Parent Company to cease to continue as a going concern.
- Evaluate the overall presentation, structure and contents of the financial statements, including the disclosures, and whether the financial statements represent the underlying transactions and events in a manner that gives a true and fair view.
- Obtain sufficient appropriate audit evidence regarding the financial information of the entities or business activities within the Group to express an opinion on the Consolidated

Financial Statements. We are responsible for the direction, supervision and performance of the group audit. We remain solely responsible for our audit opinion.

We communicate with those charged with governance regarding, among other matters, the planned scope and timing of the audit and significant audit findings, including any significant deficiencies in internal control that we identify during our audit.

Hellerup, 25 March 2021

PricewaterhouseCoopers  
Statsautoriseret Revisionspartnerselskab  
CVR No 33 77 12 31

**Rasmus Friis Jørgensen**  
State Authorised Public Accountant  
mne28705

**Michael Groth Hansen**  
State Authorised Public Accountant  
mne33228

## Consolidated income statement

EURm	Note	2020	2019
<b>Continuing operations</b>			
Revenue, gross	2.1	1,071.2	1,129.6
Interchange fees and processing fees		(350.8)	(382.3)
<b>Revenue, net of interchange fees and processing fees</b>	2.1	<b>720.4</b>	<b>747.3</b>
Cost of sales		(40.7)	(38.2)
External expenses		(180.2)	(181.3)
Staff costs	2.3	(224.3)	(232.8)
<b>Operating result before depreciation and amortisation before special items (EBITDA B.S.I.)</b>		<b>275.2</b>	<b>295.0</b>
Special items	2.2	(133.1)	(97.0)
<b>Operating result before depreciation and amortisation (EBITDA)</b>		<b>142.1</b>	<b>198.0</b>
Amortisation of business combination intangibles, customer agreements & impairment losses	4.2 & 4.3	(58.3)	(62.1)
Underlying depreciation and amortisation	4.2 & 4.3	(99.5)	(79.3)
<b>Operating result (EBIT)</b>		<b>(15.7)</b>	<b>56.6</b>
Result from associates after tax	4.5	4.5	-
Fair value adjustment on liability related to Visa shares		-	(1.6)
Fair value adjustment of Visa shares related to Nets Branch Norway and proceeds (shares) related to Nets Branch Sweden		0.4	5.0
Financial income and expenses, net	5.4	1.1	(70.0)
<b>Net financials</b>		<b>6.0</b>	<b>(66.6)</b>
<b>Result before tax</b>		<b>(9.7)</b>	<b>(10.0)</b>
Income taxes	6.1	16.3	(18.1)
<b>Result from continuing operations</b>		<b>6.6</b>	<b>(28.1)</b>
Result from discontinuing operations	4.6	<b>61.5</b>	<b>60.3</b>
<b>Result for the year</b>		<b>68.1</b>	<b>32.2</b>

EURm	Note	2020	2019
The result is attributable to:			
Owners of Nets A/S, continuing operations		(1.2)	(30.2)
Owners of Nets A/S, discontinuing operations		61.5	60.3
Non-controlling interests, continuing operations		7.8	2.1
		<b>68.1</b>	<b>32.2</b>
<b>Non-GAAP performance measures, continuing operations</b>			
Operating result before depreciation and amortisation (EBITDA) before special items		275.2	295.0
Underlying depreciation and amortisation		(99.5)	(79.3)
<b>Adjusted EBIT</b>		<b>175.7</b>	<b>215.7</b>

## Consolidated statement of other comprehensive income

EURm	Note	2020	2019
<b>Result for the year</b>		<b>68.1</b>	<b>32.2</b>
<b>Other comprehensive income:</b>			
<i>Items that will not be reclassified subsequently to the consolidated income statement:</i>			
Actuarial gains/(loss) on defined benefit pension plans	7.1	(0.3)	0.2
<b>Total items never reclassified to the consolidated income statement</b>		<b>(0.3)</b>	<b>0.2</b>
<i>Items that will be reclassified subsequently to the consolidated income statement, when specific conditions are met:</i>			
Currency translation adjustments, foreign enterprises		(11.3)	(1.1)
Reclassification of currency swap to the consolidated income statement		(12.5)	-
Net gains/(loss) on cash flow hedges		0.7	1.0
Tax on fair value adjustments		2.6	(0.4)
<b>Total items that may be reclassified to the consolidated income statement subsequently</b>		<b>(20.5)</b>	<b>(0.5)</b>
<b>Other comprehensive income for the year, net of tax</b>		<b>(20.8)</b>	<b>(0.3)</b>
<b>Total comprehensive income for the year, net of tax</b>		<b>47.3</b>	<b>31.9</b>
Total comprehensive income for the year is attributable to:			
Owners of Nets A/S, continuing operations		(15.4)	(30.5)
Owners of Nets A/S, discontinuing operations		61.5	60.3
Non-controlling interests, continuing operations		1.2	2.1
		<b>47.3</b>	<b>31.9</b>

## Consolidated balance sheet as at 31 December

EURm	Note	2020	2019
<b>Assets</b>			
<b>Non-current assets</b>			
Goodwill	4.2	1,691.4	1,360.8
Other intangible assets	4.2	498.8	451.6
Plant and equipment	4.3	143.1	134.0
Investment in associates	4.5	37.2	32.6
Derivative financial instruments	3.5	-	4.3
Deferred tax assets	6.1	28.5	11.1
<b>Total non-current assets</b>		<b>2,399.0</b>	<b>1,994.4</b>
<b>Current assets</b>			
Inventories	3.1.1	9.6	9.0
Trade and other receivables	3.1.2	148.1	121.0
Contract assets	2.1	27.7	10.5
Clearing-related assets	3.2	461.8	707.5
Prepayments		35.2	29.8
Receivables from Group enterprises		82.4	61.0
Other financial assets		9.0	15.8
Cash and cash equivalents	3.3	189.7	153.5
Assets held-for-sale	4.6	1,107.5	935.2
<b>Total current assets</b>		<b>2,071.0</b>	<b>2,043.3</b>
<b>Total assets</b>		<b>4,470.0</b>	<b>4,037.7</b>

EURm	Note	2020	2019
<b>Equity and liabilities</b>			
<b>Equity</b>			
Share capital	5.1	26.9	26.9
Reserves		1,225.8	1,363.5
<b>Equity, owners of Nets A/S</b>		<b>1,252.7</b>	<b>1,390.4</b>
Non-controlling interests		133.4	132.2
<b>Total equity</b>		<b>1,386.1</b>	<b>1,522.6</b>
<b>Non-current liabilities</b>			
Borrowings	5.2	401.4	325.3
Liabilities to Group enterprises	5.2	1,021.8	689.0
Pension liabilities, net	7.1	4.0	4.0
Derivative financial instruments	3.5	7.8	-
Other liabilities	5.6	11.8	160.9
Lease liabilities	5.3	62.2	68.9
Deferred tax liabilities	6.1	83.0	65.7
<b>Total non-current liabilities</b>		<b>1,592.0</b>	<b>1,313.8</b>
<b>Current liabilities</b>			
Bank overdraft	5.2	8.0	17.5
Trade and other payables	3.1.3	307.7	216.0
Contract liabilities	2.1	4.2	6.9
Clearing-related liabilities	3.2	577.5	810.7
Liabilities to Group enterprises		24.4	63.2
Other liabilities	5.6	333.6	1.9
Lease liabilities	5.3	11.2	17.5
Other financial liabilities		1.1	1.4
Current tax liabilities	6.1	179.7	21.8
Liabilities held-for-sale	4.6	44.5	44.4
<b>Total current liabilities</b>		<b>1,491.9</b>	<b>1,201.3</b>
<b>Total liabilities</b>		<b>3,083.9</b>	<b>2,515.1</b>
<b>Total equity and liabilities</b>		<b>4,470.0</b>	<b>4,037.7</b>

## Consolidated statement of cash flows for the year ended 31 December

EURm	Note	2020	2019	EURm	Note	2020	2019
EBITDA before Special items from continuing operations		275.2	295.0	<b>Net cash flow for the year</b>		<b>54.3</b>	<b>88.5</b>
Special items from continuing operations		(133.1)	(97.0)	Cash and cash equivalents as at 1 January		136.0	43.9
EBITDA from discontinued operations	4.6	80.9	97.0	Exchange gain/(loss) on cash and cash equivalents		(8.6)	3.6
Other non-cash items		1.5	-	<b>Net cash and cash equivalents as at 31 December</b>		<b>181.7</b>	<b>136.0</b>
Change in narrow working capital		38.1	(9.7)	Bank overdraft (clearing-related balances )		8.0	7.2
Interest and similar items, net		(59.9)	(51.0)	Bank overdraft (own cash)		0	10.3
Taxes paid	6.1	(21.9)	(23.4)	<b>Cash and cash equivalents as at 31 December</b>	3.3	<b>189.7</b>	<b>153.5</b>
<b>Net cash flow from operating activities excluding clearing-related balances</b>		<b>180.8</b>	<b>210.9</b>	<b>Non-GAAP performance measures</b>			
Change in clearing-related balances		11.7	109.7	<b>Net cash and cash equivalents as at 31 December</b>		<b>181.7</b>	<b>136.0</b>
<b>Net cash from operating activities</b>		<b>192.5</b>	<b>320.6</b>	Clearing-related assets as at 31 December		461.8	707.5
Purchase of intangible assets	4.2	(163.9)	(85.6)	Clearing-related liabilities as at 31 December		(577.5)	(810.7)
Purchase of plant and equipment	4.3	(15.2)	(25.8)	Adjustment for Visa proceeds		(0.6)	(0.8)
Investments and mergers	4.1	(355.5)	(108.3)	<b>Own cash as at 31 December</b>	3.3	<b>65.4</b>	<b>32.0</b>
Proceeds from Visa shares		6.2	24.2	<b>Own cash as at 1 January</b>		<b>32.0</b>	<b>99.0</b>
Payment of proceeds from Visa shares		-	(21.4)	Net cash from operating activities excluding clearing-related balances		180.8	210.9
<b>Net cash from investing activities</b>		<b>(528.4)</b>	<b>(216.9)</b>	Net cash from investing activities in the year		(533.6)	(279.9)
Proceeds from shareholder loan		478.7	-	Net cash from financing activities excluding clearing-related activities		390.2	(15.2)
Repayment of shareholder loan		(107.1)	(74.0)	Own cash acquired from takeover		4.4	13.6
Proceeds from borrowings		75.6	87.9	Net cash from pass-through Visa proceeds		0.2	-
Repayment of borrowings		(50.4)	(10.0)	Exchange gain/(loss) on cash and cash equivalents		(8.6)	3.6
Repayment of finance lease liabilities		(19.1)	(19.1)	<b>Own cash as at 31 December</b>		<b>65.4</b>	<b>32.0</b>
Settlement of interest swap		12.5	-				
<b>Net cash from financing activities</b>		<b>390.2</b>	<b>(15.2)</b>				



## Consolidated statement of changes in equity as at 31 December

	2020						
EURm	Share capital	Hedge reserves	Currency translation reserves	Retained earnings	Equity, owners of Nets A/S	Non-controlling interests	Total equity
<b>2020</b>							
Equity as at 1 January	26.9	3.9	(80.5)	1,440.1	1,390.4	132.2	1,522.6
Result for the year	-	-	-	60.3	60.3	7.8	68.1
<b>Other comprehensive income for the year</b>							
Actuarial gains/(loss) related to defined benefit pension plans	-	-	-	(0.3)	(0.3)	-	(0.3)
Currency translation adjustments, foreign enterprises	-	-	(4.7)	-	(4.7)	(6.6)	(11.3)
Settlement of interest swap	-	(12.5)	-	-	(12.5)	-	(12.5)
Net gain/(loss) on cash flow hedges	-	0.7	-	-	0.7	-	0.7
Tax on fair value adjustments	-	2.6	-	-	2.6	-	2.6
<b>Other comprehensive income for the year</b>	-	(9.2)	(4.7)	(0.3)	(14.2)	(6.6)	(20.8)
<b>Total comprehensive income for the year</b>	-	(9.2)	(4.7)	60.0	46.1	1.2	47.3
Share based payments	-	-	-	1.5	1.5	-	1.5
Adjustment Other Liabilities	-	-	-	(185.3)	(185.3)	-	(185.3)
<b>Total changes in equity</b>	-	(9.2)	(4.7)	(123.8)	(137.7)	1.2	(136.5)
<b>Equity as at 31 December</b>	<b>26.9</b>	<b>(5.3)</b>	<b>(85.2)</b>	<b>1,316.3</b>	<b>1,252.7</b>	<b>133.4</b>	<b>1,386.1</b>

## Consolidated statement of changes in equity as at 31 December

	2019							
EURm	Share capital	Treasury share reserve	Hedge reserves	Currency translation reserves	Retained earnings	Equity, owners of Nets A/S	Non-controlling interests	Total equity
<b>2019</b>								
Equity as at 1 January	26.9	(8.1)	2.9	(79.4)	1,498.5	1,440.8	21.7	1,462.5
Result for the year	-	-	-	-	30.1	30.1	2.1	32.2
<b>Other comprehensive income for the year</b>								
Actuarial gains/(loss) related to defined benefit pension plans	-	-	-	-	0.2	0.2	-	0.2
Currency translation adjustments, foreign enterprises	-	-	-	(1.1)	-	(1.1)	-	(1.1)
Net gain/(loss) on cash flow hedges	-	-	1.0	-	-	1.0	-	1.0
Tax on fair value adjustments	-	-	-	-	(0.4)	(0.4)	-	(0.4)
<b>Other comprehensive income for the year</b>	-	-	1.0	(1.1)	(0.2)	(0.3)	-	(0.3)
<b>Total comprehensive income for the year</b>	-	-	1.0	(1.1)	29.9	29.8	2.1	31.9
Capital decrease	-	8.1	-	-	(8.1)	-	-	-
Tax on group contribution after tax	-	-	-	-	47.2	47.2	-	47.2
Acquisition of non-controlling interests	-	-	-	-	26.0	26.0	(26.0)	-
Addition of non-controlling interests from Business Combinations	-	-	-	-	-	-	134.4	134.4
Adjustment Other Liabilities	-	-	-	-	(153.4)	(153.4)	-	(153.4)
<b>Total changes in equity</b>	-	8.1	1.0	(1.1)	(58.4)	(50.4)	110.5	60.1
<b>Equity as at 31 December</b>	26.9	-	3.9	(80.5)	1,440.1	1,390.4	132.2	1,522.6

# Contents

With the aim of providing enhanced information and a better understanding of the Group's financial results, position and cash flows, the notes to the consolidated financial statements have been structured into key themes. Further, to provide additional context to the IFRS financial statements and disclosures, narrative comments have been placed adjacent to the disclosures in the relevant theme section. The notes are presented in the following themes:

- Basis of preparation
- Earnings
- Working capital
- Strategic investment and divestment
- Funding and capital structure
- Tax and Governance
- Other disclosures

For ease of reference, an overview of how the financial statement disclosure notes have been allocated to each of the respective themes is set out below.

<b>Basis of preparation</b>	<b>28</b>	<b>Strategic investment and divestment</b>	<b>45</b>	<b>Other disclosures</b>	<b>68</b>
1.1 Basis of preparation	28	4.1 Business combinations and asset acquisitions	45	7.1 Pension assets and pension obligations, net	68
1.2 Changes in accounting policies and disclosures	29	4.2 Intangible assets	49	7.2 Classification of financial assets and financial liabilities	70
1.3 Summary of key accounting estimates and judgements	29	4.3 Plant and equipment	51	7.3 Standards issued but not yet effective	71
1.4 Basis for consolidation	29	4.4 Impairment tests	52	7.4 Events after the balance sheet date	71
1.5 Foreign currency translation	30	4.5 Investment in associates	53	7.5 Companies in the Group	72
		4.6 Discontinued operations	54	7.6 Financial definitions	73
<b>Earnings</b>	<b>31</b>	<b>Funding and capital structure</b>	<b>56</b>		
2.1 Revenue	31	5.1 Share capital	56		
2.2 Cost and Special items	34	5.2 Borrowings and related risks	57		
2.3 Staff costs	35	5.3 Leases	60		
2.4 Foreign currency exposure	36	5.4 Net financials	61		
		5.5 Interest risk management	62		
<b>Working capital</b>	<b>38</b>	5.6 Other liabilities	62		
3.1.1 Inventories	39	5.7 Commitments, contingencies and collaterals	62		
3.1.2 Trade and other receivables	39				
3.1.3 Trade and other payables	40	<b>Tax and Governance</b>	<b>63</b>		
3.2 Clearing-related balances	40	6.1 Income and deferred income taxes	63		
3.3 Cash and cash equivalents	41	6.2 Related party transactions	66		
3.4 Financial risk management	42	6.3 Share-based Payment	67		
3.5 Derivative financial certificates	43	6.4 Fee to statutory auditors	67		

**Section 1:**

# Basis of preparation

**In this section**

1.1	Basis of preparation	28
1.2	Changes in accounting policies and disclosures	29
1.3	Summary of key accounting estimates and judgements	29
1.4	Basis for consolidation	29
1.5	Foreign currency translation	30

**Section 1**

# Basis of preparation

**Note 1.1****BASIS OF PREPARATION**

The basis of preparation relates to the accounting framework which Executive Management has applied in the preparation of the consolidated financial statements of Nets A/S. The consolidated financial statements are prepared on going concern.

International Financial Reporting Standards (IFRS) and interpretations (IFRIC), as adopted by the European Union, and further requirements in the Danish Financial Statements Act for entities in reporting class C have been applied in the preparation of these consolidated financial statements.

Included within these financial statements are the following financial measures which are non-IFRS:

- Adjusted EBIT
- Special Items
- EBITDA
- Own cash

The non-GAAP performance measures are defined in Note 7.6.

The Company is incorporated and registered in Denmark. All figures in the financial statements are, except when otherwise indicated, presented rounded in million Euro with one decimal point.

The accounting policies described in the financial statements have been applied consistently in each of the periods presented.

The consolidated financial statements have been prepared on a historical cost basis, except for certain financial assets and liabilities (including derivative instruments) measured at fair value as disclosed in Note 7.2.

## Section 1

# Basis of preparation (continued)

### Note 1.2

#### CHANGES IN ACCOUNTING POLICIES AND DISCLOSURES AND NEW AND AMENDED STANDARDS AND INTERPRETATIONS

The Group applied for the first time certain standards and amendments, which are effective for annual periods beginning on or after 1 January 2020. None of these amendments have had material impact on the Group.

A summary of IFRS Standards issued but not yet effective is included in Note 7.3.

### Note 1.3

#### SUMMARY OF KEY ACCOUNTING ESTIMATES AND JUDGEMENTS

The preparation of the Group's consolidated financial statements requires Management to make assumptions that affect the reported amount of assets and liabilities at the balance sheet date and the reported amounts of revenue and expenses during the financial period.

Estimates and judgements used in the determination of reported results are continuously evaluated and are based on historical experience and on various other factors that are believed to be reasonable under the circumstances. Actual results may differ from these estimates under different assumptions or conditions.

Management considers the following estimates and related judgements material to the assets and liabilities recognised in the consolidated financial statements; these are described in further detail adjacent to the disclosure Note.

- Use of special items (Note 2.2) (judgements)
- Business combinations and asset acquisitions (Note 4.1) (judgment and estimate)
- Useful life of intangible assets (Note 4.2) (estimate)
- Recoverable amount of capitalised development projects (Note 4.4) (estimate)
- Goodwill and other intangible assets allocated to Discontinued operations (Note 4.6) (estimate)
- Incremental borrowing rate and expected lease term for lease agreements (Note 5.3) (estimate)
- Recognition of deferred tax assets and uncertain tax positions (Note 6.1) (judgment)

### Note 1.4

#### BASIS FOR CONSOLIDATION

The consolidated financial statements incorporates the financial information of Nets A/S (the "Parent Company") and its subsidiaries (together, "the Group" or "Nets"). Control is achieved where the Group is exposed, or has rights, to variable returns from its involvement with an entity and

has the ability to affect those returns through its power over the entity. Potential voting rights are included in the assessment of whether the Group has power over an entity.

Income and expenses of subsidiaries acquired or disposed of during the year are included in the consolidated statement of comprehensive income from the date on which the Group obtains control or up to the date on which the Group ceases to have control, as appropriate. Total comprehensive income of subsidiaries is attributed to the owners of the Group and to the non-controlling interests, even if this results in the non-controlling interests having a deficit balance.

When necessary, adjustments are made to the financial information of subsidiaries to bring their accounting policies into line with those used by the Group.

All intra-group transactions, balances, income and expenses are eliminated in full on consolidation for continuing operations.

**Note 1.5****FOREIGN CURRENCY TRANSLATION**

Functional and presentational currency items included in the financial information of each of the Group's entities are measured using the currency of the primary economic environment in which the entity operates (functional currency). The consolidated financial information is presented in Euro (EUR), which is also the functional and presentational currency of the Parent Company.

On recognition of foreign branches which are integrated entities, monetary items are translated at the exchange rates at the balance sheet date. Non-monetary items are translated at the exchange rates at the acquisition date or at the date of any subsequent revaluation or impairment of the asset. Items in the consolidated income statements are translated at the exchange rates at the transaction date, although items derived from non-monetary items are translated at the historical exchange rates applying to the non-monetary items.

**TRANSLATION OF TRANSACTIONS AND BALANCES**

Foreign currency transactions are translated into the functional currency using the exchange rates prevailing at the dates of the transactions. Foreign exchange gains and losses resulting from the settlement of such transactions and from the translation at year-end exchange rates of monetary assets and liabilities denominated in foreign currencies are recognised in the consolidated income statement.

**TRANSLATION OF GROUP COMPANIES**

Financial information of foreign subsidiaries is translated into Euro at the exchange rates prevailing at the end of the reporting period for assets and liabilities, and at average exchange rates for consolidated income statement and other comprehensive income items.

All effects of exchange rate adjustment are recognised in the consolidated income statement, except for exchange rate adjustments of investments in subsidiaries arising from:

- the translation of foreign subsidiaries' net assets including goodwill recognised at acquisition date, at the beginning of the year at the exchange rates at the end of the reporting period;
- the translation of foreign subsidiaries' income statements using average exchange rates, whereas balance sheet items are translated using the exchange rates prevailing at the end of the reporting period.

The above exchange rate adjustments are recognised in other comprehensive income.

**Section 2:**

# Earnings

This section contains disclosure information related to revenue and costs. The section also discloses information regarding foreign currency exposure.

Revenue	EBITDA b.s.i.
<b>720</b>	<b>275</b>

**In this section**

2.1	Revenue	31
2.2	Costs and Special items	34
2.3	Staff costs	35
2.4	Foreign currency exposure	36

**Note 2.1**

## Revenue

**Significant accounting policies****REVENUE RECOGNITION**

The Group earns revenue from its customers on a transactional basis and on a non-transactional basis:

**Transaction based revenue** – includes revenue generated through a combination of (a) a fee per transaction processed (which represents the primary revenue model in the Issuers & eSecurity Services business areas) and (b) an ad valorem fee based on the value of transactions acquired (which represents the primary revenue model of the Merchant Services business area).

**Non-transaction based revenue** – includes revenue generated through provision of subscription-based fees related to the sale and rental of point-of-sale (POS) and related solutions, fees related to the sale of value-added services and revenue from development projects across the two business areas.

Revenue from transaction service charges, transaction processing and similar services is recognised as revenue when services are rendered.

Revenue from the sale of products is recognised when the buyer obtains control of the goods, usually on delivery of the goods. Revenue from the sale of products is measured at the fair value of the consideration received or receivable, net of returns.

Rental income arising from leases of terminals is accounted for on a straight-line basis over the lease terms and is included in revenue due to its operating nature.

Revenues from services obligations to be provided over a period of time are initially recognised as a contract liability and then recognised on a straight-line basis over the period during which the services are rendered.

Revenue is recognised as the gross amount excluding VAT, taxes and duties and discounts in relation to the sale. Revenue is measured at the fair value of the consideration received or receivable. Payment terms vary between 0-45 days.

**Interchange fees and processing fees**

Interchange fees and processing fees are the accumulated total of all fees directly related to creating a transaction service charge and sales of other services. This represents interchange fees, processing fees, sales commission, network fees and handling fees.

**Note 2.1****Revenue** (continued)**CONTRACT ASSETS AND LIABILITIES**

A contract asset is recognised for the Group's transferring of goods or services, if the customer has either not paid consideration or if the payment is not due. The contract assets primarily relate to development projects in progress.

A contract liability is recognised if the customer pays consideration or the Group has a right to an amount of consideration that is unconditional, before the Group transfers goods or services to the customer. The contract liabilities primarily relate to prepayments received from customers in relation to development contracts and other non-transaction-based revenue.

**BUSINESS AREAS**

The Executive Management evaluates the activities from a business unit perspective. Related to the announced sale of the account-to-account business to Mastercard the remaining business activities have been reorganised under two business areas Merchant Services and Issuer & eSecurity Services:

**Merchant Services** provide in-store, online and mobile payment acceptance solutions to merchants across the Nordic and central European regions, from large corporate chains to small and medium-sized enterprises and micro-merchants. We serve our merchants through a broad set of distribution channels, including indirect partnership relations such as bank referrals, value-added resellers and web developers as well as through our direct sales force. Our breadth of service, payment type and geographic coverage allows us to be a one-stop shop for merchants in the countries in which we operate.

**Issuer & eSecurity Services** provide outsourced processing services to issuers of payment cards, primarily banks as well as complementary services including Card Management Systems (CMS), fraud and dispute solutions and mobile wallet technology. This business area is also operating and processing the national debit card schemes in Denmark and Norway, branded Dankort and BankAxept, respectively.

EURm	2020	2019
<b>Gross revenue per transaction type</b>		
Transaction services	890.8	989.3
Non-transaction services	180.4	140.3
<b>Total</b>	<b>1,071.2</b>	<b>1,129.6</b>
<b>Gross revenue per business area</b>		
Merchant Services	739.3	773.2
Issuer & eSecurity Services	331.9	356.4
<b>Total</b>	<b>1,071.2</b>	<b>1,129.6</b>
<b>Net revenue per business area</b>		
Merchant Services	388.5	390.9
Issuer & eSecurity Services	331.9	356.4
<b>Total</b>	<b>720.4</b>	<b>747.3</b>



**Note 2.1****Revenue** (continued)

EURm	2020	2019
<b>Gross revenue per geographical area</b>		
Denmark	466.1	490.1
Finland	201.8	244.1
Norway	199.5	236.9
Sweden	99.4	114.2
Poland	94.6	33.0
Baltics	9.8	11.3
<b>Total</b>	<b>1,071.2</b>	<b>1,129.6</b>
<b>Net revenue per geographical area</b>		
Denmark	308.8	306.9
Finland	121.7	149.2
Norway	173.9	202.9
Sweden	58.0	61.5
Poland	50.3	18.0
Baltics	7.7	8.8
<b>Total</b>	<b>720.4</b>	<b>747.3</b>

The geographical breakdown of the revenue is based on the location of the legal entities and branches in the Group.

EURm	2020	2019
<b>Assets and liabilities related to contracts with customers</b>		
Contract assets relating to projects and consultancy services	27.7	10.5
<b>Total contract assets</b>	<b>27.7</b>	<b>10.5</b>
Other prepayments from customers	4.2	6.9
<b>Total contract liabilities</b>	<b>4.2</b>	<b>6.9</b>

No amounts are overdue for contract assets relating to projects and consultancy services.  
Contract assets mainly relates to contracts with the Danish Government (MitID and NemLogin)

**Note 2.2****Costs and Special items****Significant accounting policies****COST OF SALES**

Cost of sales comprises all costs related to products and services which have been sold. This mainly represents the cost of terminals sold and cost related to the pay-later solution.

**EXTERNAL EXPENSES**

External expenses mainly comprise IT operation, software, maintenance and development costs that do not qualify for capitalisation, lease expenses and other marketing, sales and distribution costs, losses and card fraud.

Immaterial other gains and losses of a nature secondary to the main activities of the Group are recognised within external expenses.

**SPECIAL ITEMS**

Special items comprise costs or income that cannot be attributed directly to the Group's ordinary activities. They are therefore separately disclosed to allow a more comparable view of underlying business performance.

Special items in the year amounted to EUR 133.1 million (2019: EUR 97.0 million) and included the following costs:

EURm	2020			2019		
	External expenses	Staff costs	Total	External expenses	Staff costs	Total
<b>Special items</b>						
Reorganisation, restructuring and refurbishment	(5.2)	(19.2)	<b>(24.4)</b>	(14.0)	(9.2)	<b>(23.2)</b>
Business set-ups, acquisitions and disposals	(30.6)	(3.1)	<b>(33.7)</b>	(23.7)	(4.5)	<b>(28.2)</b>
Transformation programme	(35.7)	(5.9)	<b>(41.6)</b>	(38.6)	(7.0)	<b>(45.6)</b>
One-off losses, etc.	(30.1)	(3.3)	<b>(33.4)</b>	-	-	-
<b>Total special items</b>	<b>(101.6)</b>	<b>(31.5)</b>	<b>(133.1)</b>	<b>(76.3)</b>	<b>(20.7)</b>	<b>(97.0)</b>

**Key accounting estimates and judgements**

The use of special items entails Management judgement in the separation from other items in the income statement. Management carefully considers such changes in order to ensure the correct distinction between the operating activities and restructuring of the Group carried out to enhance the future earnings potential. All costs presented under Special items are directly derived from the books and records and carefully monitored by Management on a monthly basis to ensure that only cost meeting the criteria are included.

**Note 2.2****Costs and Special items** (continued)**Financial comments****REORGANISATION, RESTRUCTURING AND REFURBISHMENT**

Costs of reorganisation, restructuring and refurbishment amounted to EUR 24.4 million and mainly include costs related to termination of employees as part of making Nets more cost-efficient and competitive in meeting the strategy of being operationally excellent.

**BUSINESS SET-UPS, ACQUISITIONS AND DISPOSALS**

Costs associated with business set-ups, acquisitions and disposals amounted to EUR 33.7 million and include costs related to external advisors in connection with acquisitions and other M&A related activities.

**TRANSFORMATION PROGRAMME**

Costs related to the transformation programme amounted to EUR 41.6 million and included costs related to the transformation programme.

These costs related to the further development of a target operating model, and continued investments in security and stability programs as well as the implementation of cost optimisation programmes related to technology, operations and procurement. The cost of third-party consultants represents the majority of the costs relating to the transformation programme.

**ONE-OFF LOSSES, ETC.**

One-off losses etc. amounted to EUR 33.4 million and primarily included losses related to one implementation project and provisions to cover for one COVID-19 related Merchant Service credit risk. The Group also invested heavily in risk-related processes in general, including costs relating to strengthening the Groups losses model and in strengthening procedures for Merchant Service credit risk.

**Note 2.3****Staff costs****Significant accounting policies****STAFF COSTS**

Wages, salaries, pension contributions, social security contributions, annual leave, sick leave

etc. and bonuses are recognised in the year in which the associated services are rendered by employees of the Group.

EURm	Note	2020	2019
<b>Staff costs</b>			
Wages and salaries		(224.8)	(205.4)
Share-based payment cost	6.3	(1.5)	(0.1)
Pensions – defined contribution plans		(23.0)	(22.2)
Pensions – defined benefit obligations	7.1	(0.2)	(0.4)
Other social security contributions		(11.2)	(10.5)
Other employee costs		(25.7)	(38.5)
<b>Total employee costs for the year</b>		<b>(286.4)</b>	<b>(277.1)</b>
Employee costs included in development projects		30.6	23.6
<b>Total employee costs expensed in the income statement</b>		<b>(255.8)</b>	<b>(253.5)</b>
Employee costs included in special items	2.2	31.5	20.7
<b>Total employee costs included in EBITDA before special items</b>		<b>(224.3)</b>	<b>(232.8)</b>
Actuarial gain (loss) recognised in other comprehensive income	7.1	(0.3)	0.2
Average number of employees, full time equivalent		2,452	2,359
Year-end number of employees, full time equivalent		2,902	2,460

Information about remuneration to the Board of Managers and Key Personnel is disclosed in Note 6.2.

**Note 2.4**

# Foreign currency exposure

**Financial comments****TRANSACTION RISK**

The Group operates predominantly in Northern Europe and Central Europe. Hence, it is primarily exposed to exchange-rate risks from NOK, SEK, PLN and EUR, and to a minor degree USD and GBP. The DKK-based exposure is considered low, given the de facto fixed-rate policy that Denmark maintains against the Euro. The Group has only minor exposure to currencies other than those mentioned above.

Foreign currency risk is managed at Group level, focusing on two distinct areas: business activities and Group financial assets and liabilities.

**BUSINESS ACTIVITIES**

There is exchange-rate exposure associated with settlement assets and settlement obligations; however, the exposure is limited, as card transactions are generally executed and settled in the same currency and in the same timeframe. Discrepancies in outflow and inflow of clearing funds result in the Group trading currencies on an ongoing basis to settle these.

**GROUP FINANCIAL ASSETS AND LIABILITIES**

The Group holds assets and liabilities in foreign currency, mainly in two different classes, which are as follows:

- Cash at bank – the Group has cash at bank which is in different currencies relevant to underlying card-clearing structure. This and the Group's own cash are not being hedged.

**FOREIGN EXCHANGE SENSITIVITY ANALYSIS**

The Group's exposure to foreign currency fluctuations is summarised in the following tables.

A probable change in the following currencies would hypothetically impact the Group's revenue and operating profit before depreciation and amortisation for the year as outlined in the following table:

EURm	Probable change in currency	2020		2019	
		Net revenue	EBITDA	Net revenue	EBITDA
NOK	+10%	16.8	7.6	20.2	10.3
SEK	+10%	5.7	3.8	6.5	4.4
PLN	+10%	5.0	3.5	1.8	0.8
EUR	+1%	N/A	N/A	N/A	N/A

Exchange rate EUR per 100	2020			
	NOK	SEK	DKK	PLN
<i>Key currencies</i>				
Average	9.32	9.52	13.42	22.47
End of year	9.44	9.91	13.44	22.02
Year-end change	(0.7%)	3.4%	0.4%	(6.2%)

Exchange rate EUR per 100	2019			
	Nok	SEK	DKK	PLN
<i>Key currencies</i>				
Average	10.16	9.45	13.39	23.27
End of year	10.15	9.58	13.39	23.49
Year-end change	1.3%	(1.5%)	-	1.1%

**Note 2.4****Foreign currency exposure** (continued)**Financial comments**

A probable change in the following currencies against the currencies as at the balance sheet date would have the following hypothetical impact on profit before tax and the Group's equity based on the exposure of balances in foreign currency. Development in the hypothetical impact on profit before tax is given by a changed capital structure (refer to Note 5.2).

2020									
EURm	Cash and cash equivalents	Goodwill	Receivables <sup>1</sup>	Borrowings	Liabilities <sup>2</sup>	Net assets <sup>3</sup>	Probable change in currency	Hypothetical impact on result before tax	Hypothetical impact on equity
<b>Exposure of balance in foreign currency</b>									
NOK	109.1	82.7	100.1	(501.4)	(177.3)	<b>(386.8)</b>	10%	0.7	(38.7)
SEK	39.8	159.3	4.8	-	(70.0)	<b>133.9</b>	10%	(1.3)	13.4
EUR	(24.1)	209.9	115.0	(981.3)	(146.4)	<b>(826.9)</b>	1%	(0.9)	(8.3)
PLN	104.9	523.6	33.3	-	(114.3)	<b>547.5</b>	10%	0.0	54.7
<b>Total</b>	<b>229.7</b>	<b>975.5</b>	<b>253.2</b>	<b>(1,482.7)</b>	<b>(508.0)</b>	<b>(532.3)</b>			

2019									
EURm	Cash and cash equivalents	Goodwill	Receivables <sup>1</sup>	Borrowings	Liabilities <sup>2</sup>	Net assets <sup>3</sup>	Probable change in currency	Hypothetical impact on result before tax	Hypothetical impact on equity
<b>Exposure of balance in foreign currency</b>									
NOK	112.7	83.5	105.7	(674.0)	(266.9)	<b>(639.0)</b>	10%	(18.7)	(63.9)
SEK	(9.9)	157.0	39.8	-	(70.8)	<b>116.1</b>	10%	(2.7)	11.6
EUR	22.6	197.0	96.1	(426.6)	(175.8)	<b>(286.7)</b>	1%	(0.3)	(2.9)
PLN	37.5	225.1	9.8	-	(75.2)	<b>197.2</b>	10%	0.3	19.7
<b>Total</b>	<b>162.9</b>	<b>662.6</b>	<b>251.4</b>	<b>(1,100.6)</b>	<b>(588.7)</b>	<b>(612.4)</b>			

<sup>1</sup> Receivables include settlement assets.

<sup>2</sup> Liabilities include merchant creditors and settlement obligations.

<sup>3</sup> A large part of the balances in foreign currency is naturally hedged by the underlying business activities.

**Section 3:**

# Working capital

The working capital of the Group comprises narrow working capital and clearing-related balances.

Narrow working capital comprises inventory (primarily terminals, spare parts, etc.), trade receivables, pay-later solution, prepayments and other receivables and trade and other payables. Management actively focuses on optimising the narrow working capital requirements of the Group's operations.

Clearing-related balances comprise the aggregate of settlement assets less the aggregate of merchant creditors and settlement obligations, as these balances tend to offset each other.

However, Management has limited ability to improve the working capital of clearing-related balances on a day-to-day basis, as these are driven by the volume of transactions and the time elapsed since the last clearing of financial issuers/card schemes, which is why these balances fluctuate from reporting date to reporting date. A description of the components in the clearing-related balances and the key drivers behind their respective amounts is provided in Note 3.2.

Separate credit lines have been established to cover day-to-day fluctuations – see Note 5.2.

## In this section

3.1.1	Inventories	39
3.1.2	Trade and other receivables	39
3.1.3	Trade and other payables	40
3.2	Clearing-related balances	40
3.3	Cash and cash equivalents	41
3.4	Financial risk management	42
3.5	Derivative financial certificates	43

## Significant accounting policies

### FINANCIAL ASSETS

Financial assets are classified, at initial recognition, as financial assets at fair value through the income statement, financial assets at amortised cost, or as derivatives designated as hedging instruments in an effective hedge, as appropriate.

All financial assets except for trade receivables are recognised initially at fair value plus, in the case of financial assets not recorded at fair value through the income statement, transaction costs that are directly attributable to the acquisition of the financial asset.

Trade receivables including contract assets that do not contain a significant financing component are recognised at the transaction price.

### SUBSEQUENT MEASUREMENT

#### Financial assets at amortised cost

This category is the most relevant to the Group and applies to trade and other receivables and clearing-related assets.

Financial assets at amortised cost are subsequently measured at amortised cost using the effective interest rate (EIR) method, less impairment.

Interest income arising under the EIR method is recognised in financial income in the income statement. Losses arising from impairment are recognised in the income statement under external expenses.

### FINANCIAL ASSETS AT FAIR VALUE THROUGH THE INCOME STATEMENT

Listed securities are classified as held for trading and are measured at fair value through the income statement.

### IMPAIRMENT OF FINANCIAL ASSETS

Disclosures relating to impairment of financial assets are provided in the following notes:

- Trade and other receivables – Note 3.1.2
- Clearing-related balances – Note 3.2

### INVENTORIES

Inventories are measured at cost in accordance with the FIFO method. Where the expected net realisable value is lower than cost, inventories are written down to this lower value.

### TRADE AND OTHER PAYABLES

Trade and other payables are initially recognised at fair value. Subsequently, these items are measured at amortised cost.

### TRADE AND OTHER RECEIVABLES

Trade and other receivables are initially recognised at fair value and subsequently measured at amortised cost, less allowances for doubtful trade receivables. The allowances are deducted from the carrying amount of trade receivables and receivables from the pay-later solution and the amount of the loss is recognised in the income statement under External expenses. The Group applies the IFRS 9 simplified approach to measuring expected credit losses which uses a lifetime expected loss allowance for all trade receivables and contract assets.



**Note 3.1.3****Trade and other payables**

EURm	2020	2019
<b>Trade and other payables</b>		
Trade payables	106.1	70.6
Other liabilities	201.6	145.4
<b>Total</b>	<b>307.7</b>	<b>216.0</b>
<b>Other liabilities</b>		
Employee costs payable	76.5	62.3
Other payables	110.3	67.1
Interest payable	3.5	5.9
VAT and duties payable	11.3	10.1
<b>Total</b>	<b>201.6</b>	<b>145.4</b>

In 2020 other liabilities includes COVID-19 related postponement of employee tax in Denmark EUR 12.0 million.

**Note 3.2****Clearing-related balances**

EURm	2020	2019
<b>Clearing-related assets</b>		
Settlement assets	461.8	707.5
<b>Total</b>	<b>461.8</b>	<b>707.5</b>
<b>Clearing-related liabilities</b>		
Merchant creditors	450.5	574.5
Settlement obligations	127.0	236.2
<b>Total</b>	<b>577.5</b>	<b>810.7</b>

The carrying amount of clearing-related balances is, in general, driven by a combination of card turnover, average settlement days and timing of settlement.

**Settlement assets** consist primarily of the Group's receivables from the card schemes/networks/banks for transactions processed on behalf of merchants or card issuing banks.

**Merchant creditors** consist primarily of the Group's liability to merchants for transactions that have been processed but not yet settled. Certain settlement terms towards merchants exceed settlement terms towards the remittance from card scheme/banks, thus creating negative working capital.

**Settlement obligations** consist primarily of the Group's obligations to the card schemes/networks for transactions made by cardholders who are customers in issuing banks for whom the Group processes transactions. The settlement assets and settlement obligations are primarily clearing transactions and fees that are cleared at the beginning of the following month with card issuers and card acquirers respectively.



**Note 3.2****Clearing-related balances** (continued)**CREDIT RISK MANAGEMENT**

Credit risk refers to the risk that a counterparty will default on its contractual obligations, resulting in financial loss to the Group. The Group has adopted a policy of dealing with creditworthy counterparties and obtaining sufficient collateral, where appropriate, as a means of mitigating the risk of financial loss from defaults.

The Group is exposed to the risk of unpaid merchant service charges where a customer ceases to trade. To manage this risk, the Group maintains credit risk exposure in line with approved appetite for risk whilst achieving appropriate risk versus reward performance and ensuring that customers will be able to meet their obligations to the Group. In addition, the Group

is exposed to chargebacks that arise where customers may not have received the goods or services for which they have paid and seek recompense from the card issuer. Whilst the financial responsibility for a charge-back lies with the merchant, in the event that the merchant is no longer in business, the Group has a liability to re-compensate the card scheme or the issuing bank.

During 2020 Nets continued the work, initiated in 2019, to further strengthen the credit risk exposure including continued legal review of contracts, renegotiation of merchant credit risk insurance programmes, improved risk assessment for new merchants and improved monitoring of existing merchants.

**Note 3.3****Cash and cash equivalents****Significant accounting policies****CASH AND CASH EQUIVALENTS**

Cash and cash equivalents comprise cash at bank and on hand and short-term highly liquid investments that are readily convertible to known amounts of cash and therefore subject to insignificant risk of change in value.

The credit rating of the banks to which the Group has the largest exposure is monitored on a continuous basis. The Group has entered into cash pool arrangements covering all Group entities.

EURm	2020	2019
Cash at bank and on hand	189.7	153.5
<b>Cash and cash equivalents as at 31 December</b>	<b>189.7</b>	<b>153.5</b>
Bank overdrafts	(8.0)	(17.5)
<b>Cash and cash equivalents as at 31 December, net</b>	<b>181.7</b>	<b>136.0</b>
Restricted cash included in cash at bank and on hand	2.5	2.7

EURm	2020	2019
<b>Cash and cash equivalents as at 31 December, net</b>	<b>181.7</b>	<b>136.0</b>
Clearing-related assets as at 31 December	461.8	707.5
Clearing-related liabilities as at 31 December	(577.5)	(810.7)
Cash related to pass through Visa proceeds	(0.6)	(0.8)
<b>Own cash as at 31 December</b>	<b>65.4</b>	<b>32.0</b>

**Note 3.4**

# Financial risk management

**Financial comments****LIQUIDITY AND FINANCING RISK MANAGEMENT**

Liquidity management is executed on an ongoing daily basis, ensuring availability of required liquidity of the Group by appropriate cash management, and maintaining adequate liquidity reserves at any time through a combination of readily available cash, liquid investment portfolios and uncommitted as well as committed credit facilities.

The Group has established cash pooling arrangements to ensure cost-efficient and secure cash management. The Group continuously monitors

actual and future cash flows to match the maturity profiles of financial assets and liabilities.

A part of the Group's liquidity position relates to its settlement activities (settlement cash). The Group ensures that it has sufficient liquidity at any time to meet its settlement payment obligations as they fall due. This is achieved by holding significant cash balances and maintaining sufficient credit lines.

**Settlement cash**

The Group's acquiring business has a short-term settlement cycle where card schemes (predomi-

nantly Visa/Mastercard) remit cash and the Group pays merchants from these remittances.

The settlement activities can result in a significant increase in cash balances or a significant decrease in cash balances. Liquidity is needed only when merchants are remitted prior to funds being received; however, the settlements are normally performed within a few days.

The Group's issuing business also has a short-term settlement cycle where the network (local banks) remits cash and the Group pays the card acquirer or card schemes. The settlements can

result in a significant increase in cash balances or a significant decrease in cash balances. Liquidity risks occur when card acquirers are paid prior to funds being received from the network (local banks); however, settlements are normally performed within a few days.

**MATURITY ANALYSIS**

The following table details the Group's remaining contractual maturity for its non-derivative financial assets and liabilities, with agreed payment periods:

EURm	Note	2020					2019				
		< 1 month	1-3 months	4-12 months	> 1 year	Total	< 1 month	1-3 months	4-12 months	> 1 year	Total
Trade and other receivables including contract assets		119.1	16.9	31.0	8.8	175.8	96.2	14.5	16.1	4.7	131.5
Clearing-related assets		461.8	-	-	-	461.8	707.5	-	-	-	707.5
<b>Total financial assets at the end of the year by maturity</b>		<b>580.9</b>	<b>16.9</b>	<b>31.0</b>	<b>8.8</b>	<b>637.6</b>	<b>803.7</b>	<b>14.5</b>	<b>16.1</b>	<b>4.7</b>	<b>839.0</b>
Borrowings	5.2	188.2	123.7	36.0	1,285.5	1,633.4	111.9	9.7	32.9	1,104.0	1,258.5
Trade and other payables including contract liabilities		189.7	37.6	77.2	7.4	311.9	127.6	24.8	35.3	35.2	222.9
Merchant creditors		450.5	-	-	-	450.5	574.5	-	-	-	574.5
Clearing-related obligations		127.0	-	-	-	127.0	236.2	-	-	-	236.2
Other liabilities		2.0	0.4	331.2	11.8	345.4	-	0.5	1.4	160.9	162.8
Lease liabilities	5.3	3.3	0.8	10.3	68.4	82.8	3.7	1.2	13.4	76.8	95.1
<b>Total financial liabilities at the end of the year by maturity</b>		<b>960.7</b>	<b>162.5</b>	<b>454.7</b>	<b>1,373.1</b>	<b>2,951.0</b>	<b>1,053.9</b>	<b>36.2</b>	<b>83.0</b>	<b>1,376.9</b>	<b>2,550.0</b>

The maturity analysis is based on undiscounted cash flows, including estimated interest. Interest is included based on current rates. A more detailed maturity analysis of the Group loans is disclosed in Note 5.2.

**Note 3.5****Derivative financial instruments****THE GROUP HAS THE FOLLOWING DERIVATIVE FINANCIAL CERTIFICATES**

EURm	2020	2019
<b>Non-current assets</b>		
Currency swap	-	4.3
Total non-current derivative financial instruments	-	4.3
<b>Non-current liabilities</b>		
Currency swap	7.8	-
Total non-current derivative financial instruments	<b>7.8</b>	-

**CLASSIFICATION OF DERIVATIVES**

Derivatives are only used for economic hedging purposes and not as speculative investments. They are presented as current assets or liabilities to the extent they are expected to be settled within 12 months after the end of the reporting period.

The Group's accounting policy for its cash flow hedges is set out in Note 5.2. Further information about the derivatives used by the Group is provided in the section on market risk.

**FAIR VALUE MEASUREMENTS**

For information about the methods and assumptions used in determining the fair value of derivatives, refer to Note 7.2.

**HEDGE INEFFECTIVENESS**

Hedge effectiveness is determined at the inception of the hedge relationship, and through periodic prospective effectiveness assessments to ensure that an economic relationship exists between the hedged item and the hedging instrument.

For hedging of Senior Notes payments (principal amount and interest in foreign currency (EUR), the Group enters into hedge relationships where the critical terms of the hedging instrument match exactly with the terms of the hedged item. The Group therefore performs a qualitative assessment of effectiveness. If changes in circumstances affect the terms of the hedged item, such as changes in the credit risk of Nets

EURm	Cost of hedging reserve	Currency instruments	Total
<b>As at 1 January 2019</b>	(0.3)	3.9	3.6
Add: Change in fair value of hedging instrument recognised in OCI for the year	-	1.1	1.1
Less: Reclassified from OCI to profit or loss – included in finance costs	(0.4)	-	(0.4)
<b>As at 31 December 2019</b>	<b>(0.7)</b>	<b>5.0</b>	<b>4.3</b>

EURm	Cost of hedging reserve	Currency instruments	Total
<b>As at 1 January 2020</b>	(0.7)	5.0	4.3
Add: Change in fair value of hedging instrument recognised in OCI for the year	-	(11.7)	(11.7)
Less: Reclassified from OCI to profit or loss – included in finance costs	(0.4)	-	(0.4)
<b>As at 31 December 2020</b>	<b>(1.1)</b>	<b>(6.7)</b>	<b>(7.8)</b>

or the derivative counterparty, the Group uses the hypothetical derivative method to assess effectiveness.

**Note 3.5****Derivative financial certificates** (continued)**MARKET RISK****Foreign exchange risk****Exposure**

The Group's exposure to foreign currency risk at the end of the reporting period expressed in the different currencies used by the Group, is shown in Note 2.4 and 5.2, respectively.

The Group operates across Europe and is exposed to foreign exchange risk. Refer to description in Note 2.4.

**Instruments used by the Group**

The Group's treasury policy is to hedge the foreign currency risk related to the Senior Notes amounting to a notional of EUR 220 million by swapping the fixed rate EUR interest and notional exposure into fixed rate DKK and NOK, respectively. The DKK/NOK currency swap ratio is determined based on the forecast consolidated EBITDA origination in DKK and the consolidated net investment in NOK respectively.

The cross-currency swaps are classified as a hedge of future cash flows (EUR/DKK) and a hedge of net investment in a foreign operation (EUR/NOK), respectively, as the (EUR/DKK) swap is assessed to not qualifying as a hedge of a net investment in a foreign operation, but due to the Exchange Rate Mechanism ERM II agreed

between the Danish Central Bank and the European Central Bank (ECB), which limits the EUR/DKK fluctuation band to +/- 2.25%, the hedge is considered effective.

Swaps currently in place match the EUR payments until notes maturity in 2024. The cross-currency swaps replace the fixed EUR interest rate of 2.875% with a fixed DKK interest rate of 2.9285% and a fixed NOK interest rate of 4.7020%, respectively.

The swap contracts require settlement of EUR payments every 6 months. The settlement dates coincide with the dates on which Senior Notes principal and interest are payable.

The cost of hedging provisions cf. IFRS 9 are applied to the currency basis spread related to the NOK cross currency swap. The only identified source of ineffectiveness in relation to the Group's derivative financial instruments is changes in credit risk between the Group and the counterparty.

Effects of hedge accounting on the financial position and performance.

The effects of the cross-currency swaps on the Group's financial position and performance is as shown in the table:

	2020	2019
<b>Currency certificates</b>		
Carrying amount (assets/liability) (EURm)	(6.7)	5.0
Notional amount (EURm)	207.6	219.3
Maturity date	2024	2024
Change in fair value of outstanding hedging instruments since 1 January (EURm)	(11.7)	1.1
Hedged fixed interest rate until maturity	2.9285 % - 4.702 %	2.9285 % - 4.702 %

**Section 4:**

# Strategic investments and divestments

This section includes disclosure information related to how the Group executed its growth strategy related to:

- Expansion of geographical and service offering footprint through acquisitions
- Development of innovative product and service offerings

**STRATEGIC ACQUISITIONS**

The Group is actively committed to renewing and supplementing the portfolio of services offered and to strengthening our geographical footprint.

This section provides information on the consideration paid by the Group for acquiring these entities and shows how these businesses have impacted the Group's balance sheet at their

respective acquisition dates, including details on goodwill and other intangible assets acquired.

**INVESTMENTS IN DEVELOPMENT PROJECTS**

At Nets, we see easier payments as the foundation for growth and progress – both in commerce and in society.

The Group continuously innovates to bring to market products and services relevant to our focus areas in new payment certificates, analytics and authentication.

This section includes financial information related to expenditure on development projects.

**In this section**

4.1	Business combinations and asset acquisitions	45
4.2	Intangible assets	49
4.3	Plant and equipment	51
4.4	Impairment tests	52
4.5	Investment in associates	53
4.6	Discontinued operations	54

**Note 4.1**

## Business combinations and asset acquisitions

**Significant accounting policies****BUSINESS COMBINATIONS**

Acquisitions of businesses are accounted for using the acquisition method. The cost of an acquisition is measured as the aggregate of the consideration transferred measured at acquisition date fair value and the amount of any non-controlling interests in the acquiree. The Group recognises any non-controlling interest in the acquiree on an acquisition-by-acquisition basis, at either fair value (full goodwill) or at the non-controlling interest's proportionate share of the recognised amounts of the acquiree's identifiable assets.

Any contingent consideration to be transferred is measured at fair value at the acquisition date. Acquisition-related costs are expensed as and when incurred within Special Items for external expenses and staff costs.

At the acquisition date, the identifiable assets acquired and the liabilities, including contingent liabilities assumed, are recognised at their fair value at the acquisition date. Goodwill is initially measured at cost, being the excess of the aggregate of the consideration transferred and the amount of any non-controlling interest in the acquiree over the fair value of the identifiable net assets acquired.

If the initial accounting for a business combination is incomplete by the end of the reporting

year in which the combination occurs, the Group reports provisional amounts for the items for which the accounting is incomplete.

Those provisional amounts are adjusted during the following 12 months from the acquisition date, if additional assets or liabilities are recognised, to reflect new information obtained about facts and circumstances that existed at the acquisition date which, if known, would have affected the amounts recognised at that date. The effect of the adjustment is recognised in the opening balance and the comparative figures are restated accordingly.

When the Group ceases to have control of any retained interest in the entity, it is re-measured to its fair value at the date when control is lost, with the change in carrying amount recognised in the consolidated income statement.

The fair value is the initial carrying amount for the purposes of subsequently accounting for the retained interest as an associate, joint venture or financial asset. In addition, any amounts previously recognised in other comprehensive income in respect of that entity are accounted for as if the Group had directly disposed of the related assets or liabilities. This may mean that amounts previously recognised in other comprehensive income are reclassified to the consolidated income statement.

**Note 4.1****Business combinations and asset acquisitions****Key accounting estimates and judgements**

The most significant assets acquired generally comprise goodwill, customer agreements and development projects. As no active market exists for the majority of acquired assets, liabilities and contingent liabilities, in particular in respect of acquired intangible assets, Management makes estimates of the fair value. The methods applied are based on the present value of future cash flows, churn rates or other expected cash flows related to the specific asset.

The fair value of development projects and customer contracts acquired in business combinations is based on an evaluation of the conditions relating to the acquired portfolio and related customer relationships. Measurement is based on a discounted cash flow model on key assumptions about the estimated split of the acquired and expected revenue, the related churn rates and profitability of the revenue at the time of the acquisition.

**ACQUISITION OF BUSINESSES**

In 2019 the Group acquired the, Dotcard Group and the company PayPro. In January 2020 the Group acquired the companies Poplatek Payments Oy and Poplatek Oy and in October 2020 The Group acquired the "PeP Group". In 2019 and 2020 the acquisitions will have the following effect on the Group's consolidated financial statements as at the reporting date:

EURm	2020		2020		2020		Total 2020 acquisitions (Opening balance)
	Poplatek Payments Oy		Poplatek Oy		PeP Group		
	Book value on acquisition date	Opening Balance	Book value on acquisition date	Opening Balance	Book value on acquisition date	Opening Balance	
Goodwill	-	9.3	-	5.3	37.3	318.5	<b>333.1</b>
Other intangibles	0.1	2.3	-	1.2	6.1	79.4	<b>82.9</b>
Plant and equipment	0.1	0.1	0.1	0.1	24.8	24.8	<b>25.0</b>
Investment in associates	-	-	-	-	-	-	-
Deferred tax assets	-	-	-	-	-	0.4	<b>0.4</b>
Other assets	0.5	0.5	0.3	0.3	24.4	23.5	<b>24.3</b>
Cash and cash equivalent	0.1	0.1	0.4	0.4	4.7	4.7	<b>5.2</b>
Deferred tax liabilities	-	(0.4)	-	(0.2)	(0.6)	(15.1)	<b>(15.7)</b>
Borrowings	(0.3)	(0.3)	-	-	(52.9)	(52.9)	<b>(53.2)</b>
Other liabilities	(0.2)	(0.3)	(0.7)	(0.8)	(33.6)	(34.6)	<b>(35.7)</b>
Non-Controlling entities	-	-	-	-	-	-	-
<b>Consideration transferred</b>		<b>6.5</b>		<b>3.5</b>		<b>348.7</b>	<b>358.7</b>
Cash and cash equivalent in acquisition of business		(0.1)		(0.4)		(4.7)	<b>(5.2)</b>
<b>Total cash consideration</b>		<b>6.4</b>		<b>3.1</b>		<b>344.0</b>	<b>353.5</b>

Poplatek Oy and Poplatek Payments Oy  
An agreement to acquire 100% of the shares and voting rights in the Finnish companies Poplatek Oy and Poplatek Payments Oy was signed 23 December 2019, with closing date 8 January 2020. The combined purchase price amounted to EUR 18 million. Total combined consideration paid at

closing was EUR 10 million and a remaining future consideration is estimated at EUR 8 million based on a number of elements, including Revenue and EBITDA in the following years.

The combined acquisition has further strengthened the Group's presence in Finland and Europe and

will support the Merchant Services business with strengthened payment application capabilities and offerings within payment terminal services.

Goodwill represents the value of the current workforce and know-how and also the operational synergies expected from integration within the Group.

**Note 4.1****Business combinations and asset acquisitions** (continued)

Acquisition costs related to the combined purchase amounted to EUR 0.7 million.

**Centrum Rozliczeń Elektronicznych Polskie ePłatności SA ("PeP Group")**

An agreement to acquire 100 % of the shares and voting rights in PeP Group was signed on 11 March 2020, with closing date 26 October 2020 for a total cash consideration of PLN 1,559 million (EUR 349 million).

The acquisition of PeP Group, consisting of Centrum Rozliczen Elektronicznych Polskie ePlatnosci S.A. (PeP) and fully owned subsidiaries PayLane Sp. z o.o., BillBird S.A. and TopCard Sp. z o.o. has further strengthened the Group's European presence and gained access to the sixth-largest

country in the EU with high growth in digital payments and helped Nets to become one of the largest payment providers in Poland.

Goodwill represents the value of the current workforce and know-how and also the operational synergies and growth expected from integration within the Group.

If the acquisition had occurred on 1 January 2020, pro-forma revenue and loss for the year ended 31 December 2020 would have been EUR 52.6 million and EUR (3.4) million, respectively.

Acquisition costs related to the purchase amounted to EUR 7.5million.

2019:

**DOTCARD SP.Z O.O.**

An agreement to acquire 100% of the share capital and voting rights of Dotcard Sp. z o.o. was signed in June 2018 with a closing date of 4 January 2019 for a total cash consideration of PLN 302 million (EUR 70 million). The cash consideration was transferred to the sellers at 4 January 2019.

The acquisition of the holding company Dotcard Sp. z o.o. including the fully owned subsidiaries eCard S.A. and Dotpay Sp. z o.o. has further strengthened the Group's European presence and gained access to the sixth-largest country in the EU with high growth in digital payments.

Goodwill represents the value of the current workforce and know-how and also the operational synergies expected from integration within the Group.

Acquisition costs relating to the purchase amounted to EUR 2 million.

**PAYPRO S.A.**

An agreement to acquire 51% of the share capital and voting rights in PayPro was signed 8 February 2019 with a closing date 1 August 2019. The total purchase price for the acquisition of 51% of the shares, included a total cash consideration of EUR 100 million and a transfer of 49% of the ownership and voting rights of the Dotcard Group.

As of the closing date 1 August 2019, 49% of the Dotcard Group, corresponded to a fair market value of EUR 35 million. In addition to this, the Group entered into a put/call option agreement to acquire the remaining 49% at an exercise price, based on a number of elements including Revenue and EBITDA in the following years.

The acquisition has further strengthened the Group's European presence and access to the sixth-largest country in the EU with high growth in digital payments.

**Note 4.1****Business combinations and asset acquisitions** (continued)

Goodwill represents the value of the current workforce and know-how and also the operational synergies expected from integration within the Group.

If the acquisition had occurred on 1 January 2019, pro-forma revenue and loss for the year ended 31 December 2019 would have been EUR 16.0 million and EUR 9.4 million respectively.

Acquisition costs related to the purchase amounted to EUR 1.9 million.

EURm	2019		2019		Total 2019 acquisitions (Opening balance)
	Dotcard Sp. z o.o.		PayPro S.A.		
	Book value on acquisition date	Opening Balance	Book value on acquisition date	Opening Balance	
Goodwill	-	56.6	-	154.3	<b>210.9</b>
Other intangibles	0.1	16.3	0.5	48.0	<b>64.3</b>
Plant and equipment	0.3	0.3	0.3	0.3	<b>0.6</b>
Deferred tax assets	0.1	0.1	-	-	<b>0.1</b>
Other assets	10.4	9.7	2.4	2.4	<b>12.1</b>
Cash and cash equivalent	31.8	31.8	30.9	30.9	<b>62.7</b>
Deferred tax liabilities	-	(3.0)	(0.1)	(8.9)	<b>(11.9)</b>
Borrowings	(9.4)	(9.3)	-	-	<b>(9.3)</b>
Other liabilities	(31.8)	(31.8)	(26.9)	(28.0)	<b>(59.8)</b>
Non-Controlling entities	-	-	-	(99.0)	<b>(99.0)</b>
<b>Consideration transferred</b>		<b>70.7</b>		<b>100.0</b>	<b>170.7</b>
<b>Payment in shares</b>		<b>-</b>		<b>(34.4)</b>	<b>(34.4)</b>
Cash and cash equivalent in aquisition of business		(31.7)		(30.9)	<b>(62.6)</b>
<b>Total cash consideration</b>		<b>39.0</b>		<b>34.7</b>	<b>73.7</b>



**Note 4.2**

# Intangible assets

**Significant accounting policies****GOODWILL**

Goodwill arising from an acquisition of a business is carried at cost as established at the date of acquisition of the business less accumulated impairment losses, if any. Goodwill is not amortised. The carrying amount of goodwill is tested annually and if events or changes in circumstances indicate impairment.

**CUSTOMER AGREEMENTS AND RIGHTS**

Customer agreements and rights are carried at historical cost less accumulated amortisation and any impairment loss. Amortisation is calculated using the straight-line method to allocate the cost over estimated useful life, which does not exceed:

- Customer agreements 3–15 years
- Rights 3–10 years.

**SOFTWARE**

Capitalised software is amortised over the estimated useful lives of 3–7 years.

**DEVELOPMENT PROJECTS IN PROGRESS**

Development costs that are directly attributable to the design and testing of identifiable and unique projects, including software products controlled by the Group, are recognised as intangible assets when the following criteria are met:

- It is technically feasible to complete the asset so that it will be available for use
- Management intends to complete the asset and there is an ability to use or sell it
- The asset will generate probable future economic benefits
- Expenditure attributable to the asset during its development can be reliably measured.

Costs associated with maintaining the assets are recognised as an expense as and when incurred.

Directly attributable costs that are capitalised as part of the assets include employee costs.

Development projects in progress are tested for impairment at least annually.

**Key accounting estimates and judgements****CUSTOMER AGREEMENTS**

The useful life of customer agreements is determined based on periodic assessments of customer churn or actual useful life and the intended use for those assets. Such studies are completed or updated when new events occur that have the potential to impact the determination of the useful life of the asset, i.e. when events or circumstances occur that indicate the carrying amount of the asset may not be recoverable and should therefore be tested for impairment.

**SOFTWARE**

The useful life of software is determined based on periodic assessments of actual useful life and the intended use for those assets. Such studies are completed or updated when new events occur that have the potential to impact the determination of the useful life of the asset, i.e. when events or circumstances occur that indicate the carrying amount of the asset may not be recoverable and should therefore be tested for impairment.

**DEVELOPMENT PROJECTS IN PROGRESS**

For development projects in progress, Management estimates whether each project is likely to generate future economic benefits for the Group in order to qualify for recognition. The development projects are evaluated on technical as well as commercial criteria.

**Note 4.2****Intangible assets** (continued)

EURm	2020						EURm	2019					
	Goodwill	Other intangible assets				Total intangible assets		Goodwill	Other intangible assets				Total intangible assets
		Customer agreements	Software	Development projects in progress	Other intangible assets				Customer agreements	Software	Development projects in progress	Other intangible assets	
Accumulated cost as at 1 January	<b>1,360.8</b>	339.1	510.3	74.9	<b>924.3</b>	<b>2,285.1</b>	Accumulated cost as at 1 January	<b>1,946.9</b>	315.1	587.6	58.8	<b>961.5</b>	<b>2,908.4</b>
Additions from acquisitions	<b>333.1</b>	77.3	5.6	-	<b>82.9</b>	<b>416.0</b>	Additions from acquisitions	<b>210.8</b>	62.1	2.3	0.2	<b>64.6</b>	<b>275.4</b>
Additions	-	-	2.4	84.7	<b>87.1</b>	<b>87.1</b>	Additions	-	0.9	80.2	68.9	<b>150.0</b>	<b>150.0</b>
Transfer between asset groups	-	-	106.3	(106.3)	-	-	Transfer between asset groups	-	-	34.0	(34.0)	-	-
Assets disposed of	-	-	(30.5)	-	<b>(30.5)</b>	<b>(30.5)</b>	Assets disposed of	-	-	(21.2)	-	<b>(21.2)</b>	<b>(21.2)</b>
Currency translation adjustment	<b>(2.5)</b>	(0.1)	(0.9)	-	<b>(1.0)</b>	<b>(3.5)</b>	Currency translation adjustment	<b>(0.6)</b>	0.1	0.2	0.2	<b>0.5</b>	<b>(0.1)</b>
Reclassification to Assets held for sale	-	-	-	-	-	-	Reclassification to Assets held for sale	<b>(796.3)</b>	(39.1)	(172.8)	(19.2)	<b>(231.1)</b>	<b>(1,027.4)</b>
<b>Accumulated cost as at 31 December</b>	<b>1,691.4</b>	<b>416.3</b>	<b>593.2</b>	<b>53.3</b>	<b>1,062.8</b>	<b>2,754.2</b>	<b>Accumulated cost as at 31 December</b>	<b>1,360.8</b>	<b>339.1</b>	<b>510.3</b>	<b>74.9</b>	<b>924.3</b>	<b>2,285.1</b>
Accumulated amortisation and write-downs for impairment as at 1 January	-	(178.5)	(294.2)	-	<b>(472.7)</b>	<b>(472.7)</b>	Accumulated amortisation and write-downs for impairment as at 1 January	-	(158.8)	(329.0)	-	<b>(487.8)</b>	<b>(487.8)</b>
Amortisation	-	(46.6)	(74.0)	-	<b>(120.6)</b>	<b>(120.6)</b>	Amortisation	-	(43.9)	(72.0)	-	<b>(115.9)</b>	<b>(115.9)</b>
Assets disposed of	-	-	30.5	-	<b>30.5</b>	<b>30.5</b>	Assets disposed of	-	-	20.3	-	<b>20.3</b>	<b>20.3</b>
Currency translation adjustment	-	(1.1)	(0.1)	-	<b>(1.2)</b>	<b>(1.2)</b>	Currency translation adjustment	-	(0.6)	0.2	-	<b>(0.4)</b>	<b>(0.4)</b>
Reclassification to Assets held for sale	-	-	-	-	-	-	Reclassification to Assets held for sale	-	24.8	86.3	-	<b>111.1</b>	<b>111.1</b>
<b>Accumulated amortisation and write-downs for impairment as at 31 December</b>	-	<b>(226.2)</b>	<b>(337.8)</b>	-	<b>(564.0)</b>	<b>(564.0)</b>	<b>Accumulated amortisation and write-downs for impairment as at 31 December</b>	-	<b>(178.5)</b>	<b>(294.2)</b>	-	<b>(472.7)</b>	<b>(472.7)</b>
<b>Carrying amount as at 31 December</b>	<b>1,691.4</b>	<b>190.1</b>	<b>255.4</b>	<b>53.3</b>	<b>498.8</b>	<b>2,190.2</b>	<b>Carrying amount as at 31 December</b>	<b>1,360.8</b>	<b>160.6</b>	<b>216.1</b>	<b>74.9</b>	<b>451.6</b>	<b>1,812.4</b>

**Note 4.3****Plant and equipment****Significant accounting policies****PLANT AND EQUIPMENT**

Plant and equipment are stated at their purchase price, including incremental expenses on acquisition less accumulated depreciation and any recognised impairment loss.

Depreciation is provided on a straight-line basis over the expected useful economic life of the assets concerned.

The estimated useful life for this purpose is:

- Leasehold improvements: 10 years
- Terminals: 3-5 years
- Plant and machinery: 2-12 years

The useful life of plant and equipment is determined based on periodic assessments of actual useful life and the intended use for those assets.

EURm	2020				2019			
	Leasehold improvements	Terminals	Plant and machinery	Total	Leasehold improvements	Terminals	Plant and machinery	Total
Accumulated cost as at 1 January	13.6	50.3	118.7	<b>182.6</b>	11.8	48.9	41.9	<b>102.6</b>
Impact from implementing IFRS 16	-	-	-	-	-	-	64.1	<b>64.1</b>
Additions from acquisitions	-	20.4	4.4	<b>24.8</b>	0.3	-	0.3	<b>0.6</b>
Additions	2.8	8.6	12.0	<b>23.4</b>	6.2	10.7	40.5	<b>57.4</b>
Assets disposed of	-	(14.5)	(7.7)	<b>(22.2)</b>	(4.8)	(9.2)	(29.6)	<b>(43.6)</b>
Currency translation adjustment	(1.0)	(0.5)	(6.2)	<b>(7.7)</b>	0.1	(0.1)	1.5	<b>1.5</b>
<b>Accumulated cost as at 31 December</b>	<b>15.4</b>	<b>64.3</b>	<b>121.2</b>	<b>200.9</b>	<b>13.6</b>	<b>50.3</b>	<b>118.7</b>	<b>182.6</b>
Accumulated depreciation and write-downs for impairment as at 1 January	0.1	(35.5)	(13.2)	<b>(48.6)</b>	(2.8)	(31.5)	(14.1)	<b>(48.4)</b>
Depreciation	(2.3)	(10.5)	(22.0)	<b>(34.8)</b>	(1.9)	(10.6)	(27.5)	<b>(40.0)</b>
Write-downs for impairment	-	-	-	-	-	-	-	-
Assets disposed of	-	13.2	7.7	<b>20.9</b>	4.8	6.5	29.1	<b>40.4</b>
Currency translation adjustment	0.5	0.6	3.6	<b>4.7</b>	-	0.1	(0.7)	<b>(0.6)</b>
<b>Accumulated depreciation and write-downs for impairment as at 31 December</b>	<b>(1.7)</b>	<b>(32.2)</b>	<b>(23.9)</b>	<b>(57.8)</b>	<b>0.1</b>	<b>(35.5)</b>	<b>(13.2)</b>	<b>(48.6)</b>
<b>Carrying amount as at 31 December</b>	<b>13.7</b>	<b>32.1</b>	<b>97.3</b>	<b>143.1</b>	<b>13.7</b>	<b>14.8</b>	<b>105.5</b>	<b>134.0</b>

Terminals are leased by the Group to third-party merchants under operating leases. These operating leases are under various agreements which terminate in 2021 and 2023. The agreements include an extension option.

**Note 4.4**

## Impairment tests

**Significant accounting policies****IMPAIRMENT OF GOODWILL**

For the purposes of impairment testing, goodwill is allocated to each of the Group's cash-generating units that are expected to benefit from the synergies of the combination.

A cash-generating unit to which goodwill has been allocated is tested for impairment annually, or more frequently if there is any indication that the unit may be impaired.

A cash-generating unit is the smallest identifiable group of assets that generates cash inflows that are largely independent of the cash inflows from other assets or groups of assets. When determining a cash-generating unit, various factors have to be considered, including how Management monitors the operations and makes decisions.

If the recoverable amount of the cash-generating unit is less than its carrying amount, the impairment loss is allocated first to reduce the carrying amount of any goodwill allocated to the unit and then to the other assets of the unit pro rata based on the carrying amount of each asset in the unit.

Any impairment loss for goodwill is recognised directly in the income statement and cannot be reversed in subsequent periods.

On disposal of the relevant cash-generating unit, the attributable amount of goodwill is included in the determination of the gain or loss on disposal.

**IMPAIRMENT OF OTHER INTANGIBLE ASSETS AND PLANT AND EQUIPMENT**

At each reporting date, the Group assesses whether there is any indication that its other intangible assets or plant and equipment are impaired. If any such indication exists, the Group estimates the recoverable amount of the asset and the impairment loss (if any). If an asset does not generate cash flows that are independent from those of other assets or groups of assets, the recoverable amount is determined for the cash-generating unit to which the asset belongs.

The recoverable amount of an asset is the higher of its fair value less cost to sell and its value in use. If the recoverable amount of an intangible asset or plant and equipment is less than its carrying value, an impairment loss is recognised immediately in the consolidated income statement.

A reversal of an impairment loss on other intangible assets or plant and equipment is recognised as and when it arises only to the extent that the carrying amount does not exceed the recoverable amount (adjusted for depreciation and amortisation), had no impairment loss been recognised.

**Key accounting estimates and judgements**

In 2020 the recoverable amount of goodwill has been based on a fair value less cost to sell basis. The fair value less cost to sell has been based on the indicative price implicit in the Nexi deal announced on 15 November 2020. Following this analysis no impairment indications of goodwill exists.

The carrying amount of goodwill allocated to cash-generating units is as follows:

**MERCHANT SERVICES**

Merchant Services consists of goodwill recognised as part of the purchase of the Nets Group to private equity funds in 2014 and 2018, and from acquisition of activities the following years in Sweden (Payzone, DIBS Payment Services and Kortaccept Nordic), Poland (DotCard, PayPro and PeP), Denmark (Storebox) and Finland (Paytrail and PoplaTek). Goodwill has been evaluated

at aggregated level as Merchant Services is considered as one CGU. Entities are not evaluated separately, as value-added processes are generated across the Group, including synergies from combining operations, economies of scale and future growth potential.

**ISSUER & ESECURITY SERVICES**

Issuer & eSecurity Services consists of goodwill recognised as part of the purchase of the Nets Group to private equity funds in 2014 and 2018. Goodwill has been evaluated at aggregated level as Issuer & eSecurity Services is considered as one CGU. Entities are not evaluated separately, as value-added processes are generated across the Group, including synergies from combining operations, economies of scale and future growth potential.

EURm	2020	2019
<b>Cash-generating unit</b>		
Merchant Services	1,358.8	1,042.1
Issuer & eSecurity Services	309.5	318.7
<b>Total</b>	<b>1,668.3</b>	<b>1,360.8</b>

**Note 4.5****Investment in associates****Significant accounting policies****ASSOCIATES**

An associate is an entity over which the Group has significant influence. Investments in associates are recognised under the equity method.

Investments in associates are recognised in the balance sheet at the proportional share of the entity's equity value calculated in accordance with Group accounting policies.

Associates with negative equity value are measured at zero, and any receivables from these enterprises are written down, if required, based on an individual assessment. If a legal or constructive obligation exists to cover the associate's negative balance, a liability is recognised.

The income statement reflects the Group's share of the results of operations of the associate.

Any change in other comprehensive income of the associate is presented as part of the Group's other comprehensive income. In addition, when a change has been recognised directly in the equity of the associate, the Group recognises its share of any changes, when applicable, in the statement of changes in equity.

The proportionate share of the net profit/loss in the associates after tax and elimination of the proportionate share of intra-group gains/losses is recognised in the Group's consolidated income statement.

EURm	2020	2019
<b>Investment in associates</b>		
Accumulated cost as at 1 January	31.9	31.9
Currency translation adjustment	-	-
<b>Accumulated cost as at 31 December</b>	<b>31.9</b>	<b>31.9</b>
Revaluation as at 1 January	0.7	0.7
Adjustment previous year	1.9	(1.1)
Dividend distributed	-	-
Share of result after tax	2.6	1.1
Currency translation adjustment	0.1	-
<b>Revaluation as at 31 December</b>	<b>5.3</b>	<b>0.7</b>
<b>Carrying amount as at 31 December</b>	<b>37.2</b>	<b>32.6</b>
<b>Fair value recognition from business combinations</b>	<b>29.0</b>	<b>28.9</b>
<b>Carrying amount excluding fair value recognition from business combinations as at 31 December</b>	<b>8.2</b>	<b>3.7</b>

EURm	2020								2019							
	Share	Currency	Revenue	Result for the year	Net assets	Equity	Result for the year	Nets' share	Share	Currency	Revenue	Result for the year	Net assets	Equity	Result for the year	Nets' share
<b>Company name</b>																
e-Boks A/S, Denmark	50%	DKK	30.9	5.3	28.4	5.3	2.6		50%	DKK	28.7	2.4	19.0	2.8	1.2	
<b>Total</b>				<b>5.3</b>	<b>28.4</b>	<b>5.3</b>	<b>2.6</b>					<b>2.4</b>	<b>19.0</b>	<b>2.8</b>	<b>1.2</b>	

**Note 4.6**

## Discontinued operations

**Significant accounting policies**

Divestment of activities which can be clearly distinguished, operationally and for financial reporting purposes from the other business and is expected to be carried out within twelve months in accordance with a formal plan is reported as discontinuing operations.

The result after tax from discontinuing operations is presented in a separate line item in the income statement with comparative figures and is specified in this note.

Net cash from discontinuing operations is also presented in the note with comparative figures.

Assets and liabilities related to discontinuing operations are presented in separate line items as held-for-sale and are specified in the note but are presented without comparative figures.

At the time non-current assets are classified as held-for-sale an assessment of the fair value is made to identify any impairment loss from the discontinuing operations.

From the time non-current assets are held-for-sale no further depreciation or amortisation is made.

On 6 August 2019, it was announced that Nets had agreed to sell the account-to-account payment business to Mastercard for EUR 2.85 billion. On 17 August 2020, the European Commission granted a conditional clearance of the transaction, and on 5 March 2021, the transaction was completed upon receipt of all regulatory approvals and fulfilment of all customary closing conditions. Management assessed, that the signing of the agreement with Mastercard fulfilled the requirements for presenting the Group's account-to-account payment business as discontinuing operations. The activities sold to Mastercard were previously included in the business unit Corporate Services providing the payment platform for recurrent bill payments and credit transfer transactions. At the centre of this business is the ability to provide seamless and integrated solutions for recurring bill payments to corporations and consumers (e.g. Leverandørservice and Betalingsservice). It also includes solutions for real-time clearing providing instant payments.

Management has made a number of significant estimates related to the discontinuing operations. The main estimates relate to allocation of Goodwill and Other intangible assets in the consolidated balance sheet.

EURm	2020	2019
<b>Result from discontinuing operations</b>		
Revenue, gross	280.8	291.0
Interchange fees and processing fees	(1.0)	(0.9)
<b>Revenue, net of interchange fees and processing fees</b>	<b>279.8</b>	<b>290.1</b>
Cost of sales	(92.8)	(94.1)
External expenses	(70.3)	(51.1)
Staff costs	(35.8)	(47.9)
<b>Operating result before depreciation and amortisation (EBITDA)</b>	<b>80.9</b>	<b>97.0</b>
Amortisation of business combination intangibles, customer agreements & impairment losses	-	(12.3)
Underlying depreciation and amortisation	-	(1.1)
<b>Result before tax</b>	<b>80.9</b>	<b>83.6</b>
Income taxes	(19.4)	(23.3)
<b>Result from discontinuing operations</b>	<b>61.5</b>	<b>60.3</b>

External expenses and Staff cost comprises cost directly associated with the discontinued business and allocated indirect cost.

For Goodwill and Other intangible assets a majority of the values previously allocated to the Corporate Services business has been

allocated to discontinued operations based on an evaluation of the individual cash inflows. The change in deferred tax from liability to asset is due to the taxable demerger in Denmark, which created a step up in tax values on intangible assets.

**Note 4.6****Discontinued operations** (continued)

EURm	2020	2019
<b>Net cash from discontinuing operations</b>		
Net cash from operating activities*	84.8	96.5
Net cash from investing activities	(16.8)	(12.4)
<b>Total</b>	<b>68.0</b>	<b>84.1</b>
<b>Assets held-for-sale</b>		
Goodwill	794.2	796.3
Other intangible assets	137.2	120.0
Deferred tax asset	160.0	-
Trade and other receivables	13.2	11.9
Contract assets	0.7	2.9
Prepayments	2.2	4.1
<b>Total</b>	<b>1,107.5</b>	<b>935.2</b>
<b>Liabilities held-for-sale</b>		
Pension liabilities, net	-	0.7
Deferred tax liabilities	-	19.5
Trade and other payables	32.6	24.2
Contract liabilities	1.7	-
Current tax liabilities	10.2	-
<b>Total</b>	<b>44.5</b>	<b>44.4</b>

\* Net cash from operating activities does not include a share of the Groups tax payments.

**Section 5:**

# Funding and capital structure

This section includes disclosure information related to the equity and borrowings of the Group. In addition, the section includes financial risk management information related to the borrowings in the form of interest rate and funding risk.

**In this section**

5.1	Share capital	56
5.2	Borrowings and related risks	57
5.3	Leases	60
5.4	Net financials	61
5.5	Interest risk management	62
5.6	Other Liabilities	62
5.7	Commitments, contingencies and collaterals	62

**Note 5.1**

## Share capital

**Significant accounting policies****EQUITY****Dividends**

Dividends expected to be distributed for the year are recognised under a separate item in equity. Dividends and interim dividends are recognised as a liability at the time of adoption by the Annual General Meeting and the meeting of the Board of Directors, respectively.

**Foreign currency translation reserve**

Foreign currency translation reserve comprises exchange rate differences arising from translation of the functional currency of foreign enterprises' financial information into Euro.

Translation adjustments are recognised in the consolidated income statements when the net investment is realised.

**Hedge reserve**

The hedge reserve comprises fair value of hedging instruments qualifying for hedge accounting. Hedge accounting ceases when the hedging certificates matures or is no longer effective. When the hedged item is the cost of a non-financial asset or non-financial liability, the amounts recognised as other comprehensive income are transferred to the income statement in the same period that the non-financial asset or liability affects the income statement.

**Financial comments****CAPITAL MANAGEMENT**

The Group manages its capital base to ensure entities in the Group are able to continue as a going concern, and seeks to maximise the return to shareholders through adequate share of debt and equity on its balance sheet.

Within the Group, certain subsidiaries and branches are registered as payment institutions in Denmark (Nets Denmark and Centurion DK), in Finland (Nets Denmark, Finnish Branch and Paytrail) and in Poland (Dotpay, eCard, PayPro, PayLane and BillBird). Therefore, such subsidiaries and branches are subject to minimum capital requirements imposed by local authorities.



**Note 5.1****Share capital** (continued)

	2020		2019	
	Number of shares ('000)	Nominal value (EURm)	Number of shares ('000)	Nominal value (EURm)
<b>Share capital</b>				
Share capital as at 1 January	199,909	26.9	200,411	26.9
Disposal	-	-	(502)	-
<b>Share capital as at 31 December</b>	<b>199,909</b>	<b>26.9</b>	<b>199,909</b>	<b>26.9</b>

The share capital of Nets A/S was established on 5 February 2016. During 2016 the share capital was increased in connection with an IPO to a total number of 200,411,094. In 2019 502,358 treasury shares were cancelled. The share capital now consists of 199,908,736 shares each with a nominal value of DKK 1, giving a total share capital of DKK 199,908,736.

	2020	2019
	Number of shares ('000)	Number of shares ('000)
<b>Treasury shares</b>		
Treasury shares as at 1 January	-	502
Disposal of treasury shares	-	(502)
<b>Treasury shares as at 31 December</b>	<b>-</b>	<b>-</b>

**Note 5.2****Borrowings and related risks****Significant accounting policies****FINANCIAL LIABILITIES**

All financial liabilities are recognised initially at fair value and, in the case of loans and borrowings and payables, net of directly attributable transaction costs.

The Group's financial liabilities include trade and other payables, clearing-related liabilities, loans and borrowings including bank overdrafts, financial guarantee contracts and derivative financial certificates.

**Loans and borrowings**

This is the category most relevant to the Group.

After initial recognition, interest-bearing loans and borrowings are subsequently measured at amortised cost using the effective interest rate method. Gains and losses are recognised in the income statement when the liabilities are derecognised as well as through the EIR amortisation process. This category generally applies to interest-bearing loans and borrowings.

**Derecognition**

A financial liability is derecognised when the obligation under the liability is discharged or cancelled or expires. When an existing financial liability is replaced by another from the same

lender on substantially different terms, or the terms of an existing liability are substantially modified, such an exchange or modification is treated as the derecognition of the original liability and the recognition of a new liability. The difference in the respective carrying amounts is recognised in the income statement.

**DERIVATIVE FINANCIAL CERTIFICATES AND HEDGE ACCOUNTING**

Derivative financial certificates used for cash flow hedges and hedges of net investments in subsidiaries are initially recognised at fair value on the date on which a derivative contract is entered into and are subsequently remeasured at fair value. Derivatives are carried as financial assets when the fair value is positive and as financial liabilities when the fair value is negative.

Gains or losses arising from changes in the fair value of derivatives are recognized directly in the OCI as cash flow hedge reserve, except for the ineffective portion of cash flow hedges, which is recognised in the income statement as financial items.

Income and costs relating to cash flow hedges and hedges of net investments in subsidiaries are transferred from OCI on realization of the hedged item and are recognized as financial income or financial costs.

**Note 5.2****Borrowings and related risks** (continued)**LOANS AND BORROWINGS**

The Group has a EUR 220 million Senior Notes outstanding, with cross-guarantees and security provided by Nets Topco 3 S.à r.l., Nets Topco 4 S.à r.l., Nets Holdco 1 ApS, Nets Holdco 2 ApS, Nets Holdco 3 ApS, Nets Holdco 4 ApS, Nets Holdco 5 AS, Nassa Topco AS, Nassa A/S, Nets A/S, Nets Holding A/S, Nets Denmark A/S, Evergood Germany 1 GmbH and Evergood Germany 2 GmbH.

The Senior Notes (EUR 220 million) are issued by Nassa Topco AS an indirect subsidiary of Nets Topco 3 S.à.r.l. The future payments of the Senior Notes have been swapped to DKK (DKK 1,204 million) and NOK (NOK 530 million) with fixed interest rates until maturity and final exchange of notional at maturity.

Further, Nets A/S has access to a euro-denominated revolving credit facility ('RCF') expiring in 2024. The RCF commitment is EUR 240 million, of which EUR 24 million are carved out in an overdraft facility ('Overdraft Facility') and EUR 2 million are carved out for a guarantee (2019: EUR 5 million).

Together, the RCF and the Overdraft Facility are available for general corporate purposes of the Group. As of 31 December 2020, the RCF was drawn EUR 214 million (EUR 184 million by Nets A/S' subsidiaries), EUR 184 million netted of un-

amortised debt cost (2019: EUR 108 million, EUR 108 million netted of unamortised debt cost), leaving EUR 0 million (2019: EUR 103 million) undrawn as Parent Companies of Nets A/S had drawn EUR 30 million. The Overdraft Facility was undrawn (2019: EUR 10 million) as of 31 December 2020 leaving EUR 24 million (2019: EUR 14 million) available.

**REPAYMENT OF EXISTING DEBT IN RELATION TO THE LEVERAGED BUY OUT FACILITIES AND DE-LISTING**

In February 2018 the former shareholders of Nets A/S accepted the public takeover offer by Nets Holdco 5 AS, an indirect subsidiary of Nets Topco 1 S.à.r.l., which resulted in the removal of Nets A/S' shares from trading and official listing on Nasdaq Copenhagen A/S. As a part of the takeover all existing term loans in Nets A/S and its subsidiaries were refinanced. This resulted in repayment of all term loans in Nets A/S and its subsidiaries, leaving only the Senior Notes and the RCF as external borrowings in Nets A/S and its subsidiaries.

Adjacent to this transaction Nassa Topco AS issued a tender to redeem the Senior Notes prior to maturity. This option was exercised by 45.1% of the noteholders, which resulted in a repayment of EUR 180 million bringing the notional of the Senior Notes down from EUR 400 million to EUR 220 million.

**LOANS FROM PARENT COMPANY**

The Group has entered into five intra-group loan agreements with an indirect parent company from the wider corporate group above Nets A/S. These agreements are a consequence of the LBO and delisting of Nets A/S, as well as M&A activities. The loans consist of two seven-year loans (NOK 4,760 million, EUR 389 million and EUR 79 million) and two one-year loans (EUR 92 million and EUR 18 million).

**CLEARING WORKING CAPITAL FACILITIES**

In addition to the Senior Notes and the RCF, the Group has separate credit lines available for clearing working capital purposes; EUR 205 million on a committed basis, which was temporarily increased to EUR 300 million as of 31 December 2020 due to the holiday season. In addition, a EUR 30 million money market line is available on an un-committed basis. On 31 December 2020, the overdraft facilities for clearing working capital was drawn by EUR 8 million (2019: EUR 7 million), leaving EUR 292 million un-drawn (2019: EUR 398 million). In addition, the Group has three intra-day facilities available at relationship banks (EUR 300 million, EUR 105 million and NOK 400 million).

**Note 5.2****Borrowings and related risks** (continued)

EURm	2020								2019
	Interest rate		Year of maturity	Currency	Available facility	Drawn amount	Amount hedged	Carrying amount	Carrying amount
	Nominal	Effective							
<b>Term and maturity of the Group's interest bearing loans and borrowing</b>									
Revolving Credit Facility <sup>2</sup>	IBOR + 3.25% <sup>1</sup>	3.3%	2024	Multi	240.0	213.9	-	183,5	107,9
Senior Notes	2.88%	4.0%	2024	EUR	219.6	219.6	207.6	217.9	217.4
IC Loan (NOK)	NIBOR + 4.00% <sup>1</sup>	5.9%	2025	NOK	451.2	451.2	-	444.0	590.0
IC Loan1 (EUR)	EURIBOR + 4.35% <sup>1</sup>	4.4%	2025	EUR	79.1	79.1	-	79.1	79.0
IC Loan2 (EUR)	EURIBOR + 4.00% <sup>1</sup>	4.0%	2021	EUR	92.0	92.0	-	92.0	20.0
IC Loan3 (EUR)	EURIBOR + 5.00% <sup>1</sup>	5.0%	2025	EUR	388.8	388.8	-	388.8	-
IC Loan4 (EUR)	EURIBOR + 5.00% <sup>1</sup>	5.0%	2021	EUR	17.9	17.9	-	17.9	-
<b>Total long term borrowings (non-current liabilities)</b>								<b>1,423.2</b>	<b>1,014.3</b>
Overdraft Facility (own cash) <sup>2</sup>	IBOR + 2.5%	2.5%	2021	Multi	24.0	-	-	-	10.3
Overdraft Facility (clearing-related balances) <sup>3</sup>				Multi	205.0	8.0	-	8.0	7.2
Money Market (clearing-related balances)				Multi	30.0	-	-	-	-
<b>Total short-term borrowings (current liabilities) – Included in own cash calculation</b>								<b>8.0</b>	<b>17.5</b>
<b>Total loans and borrowings</b>								<b>1,431.2</b>	<b>1,031.8</b>

<sup>1</sup> For the Revolving Credit Facility and Intercompany Loans, there is a floor of 0.0% on the EURIBOR and NIBOR.

<sup>2</sup> Revolving Credit Facility commitment is EUR 240 million and overdraft carveout of EUR 24 million.

<sup>3</sup> Overdraft Facility for Clearing Working Capital ("CWC") with commitment of EUR 205 million in bank lines.

**Note 5.2****Borrowings and related risks** (continued)

EURm	2020	2019
<b>Net interest-bearing debt</b>		
Total long term borrowings exclusive of lease liabilities (non-current liabilities)	1,423.2	1,012.2
Capitalised debt costs included in carrying amount	9.1	14.4
Own cash	(65.4)	(32.1)
<b>Net interest-bearing debt</b>	<b>1,366.9</b>	<b>994.5</b>

EURm	2020					
	Carrying amounts	Contractual cash flow	<1 year	1-2 years	3-4 years	> 5 years
<b>Maturity</b>						
Senior Notes	217.9	239.9	7.5	15.1	217.3	-
Revolving Credit Facility	183.5	184.4	184.4	-	-	-
Clearing-related Facilities	8.0	8.0	8.0	-	-	-
Interest Bearing Loan from owner	1,021.8	1,209.1	156.0	86.0	967.1	-
<b>Total</b>	<b>1,431.2</b>	<b>1,641.4</b>	<b>355.9</b>	<b>101.1</b>	<b>1,184.4</b>	<b>-</b>

EURm	2019					
	Carrying amounts	Contractual cash flow	<1 year	1-2 years	3-4 years	> 5 years
<b>Maturity</b>						
Senior Notes	217.3	249.4	7.3	14.5	227.6	-
Revolving Credit Facility	107.9	108.3	108.3	-	-	-
Clearing-related Facilities	7.2	7.2	7.2	-	-	-
Loan from Group enterprises	689.2	900.9	59.6	77.8	77.9	685.6
<b>Total</b>	<b>1,021.6</b>	<b>1,265.8</b>	<b>182.4</b>	<b>92.3</b>	<b>305.5</b>	<b>685.6</b>

The maturity analysis is based on undiscounted cash flows, including estimated interest. Interest is included based on current rates.

**Note 5.3****Leases**

The Group has entered into a number of lease agreements related to equipment. The leasing period is 3–12 years and none of the agreements include conditional payments. Some of the agreements give the Group an option to pur-

chase the assets at a price lower than or equal to the assets' expected fair value at the date the option becomes exercisable, while others give the Group an option to extend or renew the agreement.

EURm	Property	Equipment	2020
<b>Lease assets</b>			
Lease assets as at 1 January 2020	74.3	8.3	82.6
Additions from acquisitions	-	0.3	0.3
Additions	5.6	2.6	8.2
Remeasurement of leases	-	-	-
Depreciation	(11.3)	(4.4)	(15.7)
Currency translation	0.4	0.1	0.5
<b>Total lease assets as at 31 December 2020</b>	<b>69.0</b>	<b>6.9</b>	<b>75.9</b>

EURm	Property	Equipment	2019
<b>Lease assets</b>			
Lease assets as at 1 January 2019	-	6.8	6.8
Impact from implementing IFRS 16	61.8	2.3	64.1
Additions	26.6	4.7	31.3
Depreciation	(14.1)	(5.5)	(19.6)
<b>Total lease assets as at 31 December 2019</b>	<b>74.3</b>	<b>8.3</b>	<b>82.6</b>

## Leases (continued)

EURm	2020	2019
<b>Lease liabilities</b>		
Commitments in relation to lease liabilities are payable as follows:		
Less than 1 year	14.4	18.2
1-5 years	39.7	39.4
More than 5 years	28.7	37.4
<b>Minimum lease payments</b>	<b>82.8</b>	<b>95.0</b>
Future finance charges	(9.4)	(8.6)
<b>Recognised as a liability</b>	<b>73.4</b>	<b>86.4</b>
<b>The present value of the lease liabilities is as follows:</b>		
Less than 1 year	11.2	17.5
1-5 years	36.1	35.6
More than 5 years	26.1	33.3
<b>Minimum lease payments</b>	<b>73.4</b>	<b>86.4</b>

EURm	2020	2019
<b>Lease, Other disclosures</b>		
Interest expenses, lease liabilities	(2.3)	(1.6)
Total Cash outflow	(19.1)	(13.7)
Expense of Short term leases	-	(0.2)

## Note 5.4

## Net financials

### Significant accounting policies

#### FINANCIAL ITEMS

Financial income and expenses comprise interest income and expenses, realised and unrealised gains, and dividends, losses on transactions denominated in foreign currencies, amortisation

of loan costs and securities and subsequent changes to contingent acquisition costs.

EURm	2020	2019
<b>Financial income</b>		
Net foreign exchange gains	52.3	-
Other income etc.	12.2	-
<b>Total financial income, exclusive of refinancing costs</b>	<b>64.5</b>	<b>-</b>
<b>Financial expenses</b>		
Interest expense	(14.1)	(9.2)
Interest expense to Parent Company	(34.5)	(35.5)
Interest expense lease liabilities	(2.3)	(2.2)
Net foreign exchange loss	-	(12.9)
Fair value adjustment of financial liabilities	-	(1.3)
Amortisation of transaction costs	(5.1)	(2.9)
Other fees etc.	(7.4)	(6.0)
<b>Total financial expenses, exclusive of refinancing costs</b>	<b>(63.4)</b>	<b>(70.0)</b>
<b>Financial income and expenses, net</b>	<b>1.1</b>	<b>(70.0)</b>

**Note 5.5**

## Interest risk management

The Group is exposed to interest rate risk on loans, credits and cash balances as well as mismatches on maturities between loans and cash, resulting in variable interest cash flows. The

Group's loan arrangements are based on variable interest rates. Cash held at variable rates partly offsets risk arising from changing interest rates on the Group's loans and credits.

EURm	Variable, non-contractual	Contractual variable rates < 1 month	Total
<b>Exposure to changes in interest rates</b>			
Cash and cash equivalents	189.7	-	<b>189.7</b>
Bank Loans	-	401.4	<b>401.4</b>
Overdraft Facilities	-	8.0	<b>8.0</b>
<b>Net</b>	<b>189.7</b>	<b>409.4</b>	<b>599.1</b>

A probable change in interest rates compared to the interest as at the balance sheet date would have the following hypothetical impact on profit

before tax and the Group's equity, based on the exposure of balances as at 31 December.

EURm	2020			2019	
	Probable change in interest	Hypothet- ical impact on result for the year	Hypothet- ical impact on equity	Hypothet- ical impact on result for the year	Hypothet- ical impact on equity
Borrowings		(8.1)	(0.2)	(7.3)	-

An increase in the interest rate of 1 p.p. would only affect result for the year with regards to the unhedged borrowings in EUR and NOK and the Revolving Credit Facility.

An increase in the interest rate of 1 p.p. would only affect equity with regards to float to fixed rate hedging certificates.

**Note 5.6**

## Other Liabilities

Other liabilities consist of deferred considerations of EUR 15.4 million and Putoption liabilities of EUR 330.0 million related to the Groups merger and acquisition activities. Liabilities has been measured in accordance with the

earn-outs/put-options clauses in the various agreements based on Management best view on key input to estimate the discounted future cashflow obligations.

**Note 5.7**

## Commitments, contingencies and collaterals

**Significant accounting policies****COMMITMENTS**

The Group has entered into a number of long-term service agreements.

**CONTINGENCIES**

The Group is engaged in certain litigation proceedings. In the opinion of Management, settlement or continuation of these proceedings is not expected to have a material effect on the Group's financial position, operating profit or cash flow.

**Section 6:**

# Tax and Governance

This section includes disclosures that relate to the Group's Tax and Governance policies.

**In this section**

6.1	Income and deferred income taxes	63
6.2	Related party transactions	66
6.3	Share-based Payment	67
6.4	Fee to statutory auditors	67

**Note 6.1**

## Income and deferred income taxes

**Significant accounting policies****INCOME TAXES**

Tax for the year comprises current income tax, change in deferred tax and adjustments from prior years. Tax is recognised in the income statement except to the extent that it relates to items recognised in other comprehensive income or equity.

The tax rates and tax laws used to compute the amount are those that are enacted, or substantively enacted, as at the reporting date in the countries where the Group operates and generates taxable income. Deferred tax arises due to temporary differences between the carrying amount in the consolidated financial statements and the tax base of assets and liabilities as at the balance sheet date. Deferred tax is not recognised for temporary differences arising on the initial recognition of goodwill and other items where amortisation for tax purposes is disallowed.

Deferred tax assets are recognised if they can be offset against deferred tax in other consolidated enterprises or if it is probable that they can be utilised in future earnings.

Deferred tax is measured on the basis of the tax rules and tax rates in the respective countries that will be effective under the legislation as at the balance sheet date when the deferred tax is expected to be realised or the liability settled.

Changes in deferred tax as a result of changes in tax rates are recognised in the consolidated income statements except for the effect of items recognised directly in Other comprehensive income.

Deferred tax assets and liabilities are offset in the Consolidated statement of financial position if the Group has a legally enforceable right to offset and the deferred tax assets and liabilities relate to the same legal tax entity.

The companies in the Group are taxed under the on-account tax scheme. Interest/refunds relating to the tax payment are included in interest income and expense and similar items.

**Note 6.1****Income and deferred income taxes** (continued)**Key accounting estimates and judgements****DEFERRED TAX ASSETS**

The Group recognises deferred tax assets, including the expected tax value of tax loss carry-forwards if Management assesses that these tax assets can be offset against positive taxable income in the near future. This judgement is made annually and is based on budgets and business plans for the coming years, including planned commercial initiatives.

As at 31 December 2020, the carrying amount of the deferred tax assets was EUR 28.5 million and unrecognised tax losses amounted to EUR 0.6 million (2019: EUR 0.8 million). In connection with the demerger of the Centurion activities a net payable tax of EUR 182 million was realized in 2020. The demerger also created a corresponding step-up value in the divested entities, offsetting the impact in the income statement. Please refer to Note 4.6.

EURm	2020	2019
<b>Income taxes expensed</b>		
Current tax on result for the year	8.3	(18.0)
Deferred tax on result for the year	2.4	1.2
Adjustments related to previous years – current tax	5.6	(1.3)
<b>Income taxes in the Income statement</b>	<b>16.3</b>	<b>(18.1)</b>

EURm	2020	2019
<b>Income taxes paid</b>		
Income taxes paid in Denmark	(16.8)	(11.2)
Income taxes paid outside Denmark	(5.1)	(12.2)
<b>Total income taxes paid</b>	<b>(21.9)</b>	<b>(23.4)</b>

The tax on the Group's result before tax differs from the theoretical amount that would arise using the weighted average tax rate applicable to profits of the consolidated entities as follows:

EURm	2020	2019
<b>Result before tax</b>	<b>(13.1)</b>	<b>(10.0)</b>
Income tax expense calculated at domestic tax rate	2.9	2.2
Deviation in foreign subsidiaries' tax rates compared with Luxembourg tax rate	0.5	0.2
Permanent differences <sup>1</sup>	(9.8)	(14.5)
Not recognised tax losses utilised or capitalised	0.2	(0.3)
Currency translation adjustment	12.6	-
Change in income tax rates on deferred tax	0.0	(0.1)
Other taxes	9.9	(5.6)
<b>Income tax expense recognised in the income statement</b>	<b>16.3</b>	<b>(18.1)</b>

EURm	2020	2019
<b>Computation of effective tax rate percentage</b>		
Statutory corporate income tax rate in Luxembourg	22.0%	22.0%
Deviation in foreign subsidiaries' tax rates compared with Luxembourg tax rate	4.0%	2.0%
Permanent differences <sup>1</sup>	(74.3%)	(145.2%)
Not recognised tax losses utilised or capitalised	1.4%	(3.3%)
Currency translation adjustment	95.9%	- %
Change in income tax rates on deferred tax	-%	(0.6%)
Other taxes	75.5%	(55.6%)
<b>Effective tax rate</b>	<b>124.5%</b>	<b>(180.7%)</b>

<sup>1</sup> Permanent differences mainly include non-deductible M&A expenses and non-deductible finance cost.



**Note 6.1****Income and deferred income taxes** (continued)

2020						
EURm	Intangible assets	Plant & equipment	Other receiv- ables	Employee benefits obligation	Deferred tax losses carried forward	Total
<b>Development in deferred income tax assets and liabilities</b>						
Net deferred tax assets/(liabilities) as at 1 January	(61.1)	2.8	0.6	0.7	2.4	(54.6)
Additions from acquisitions	(15.3)	0.4	-	-	-	(14.9)
Deferred tax on result for the year	(0.3)	(1.1)	0.9	(0.2)	7.2	6.5
Adjustment to previous year tax	(1.6)	-	2.2	-	8.6	9.2
Currency translation adjustment	(0.4)	(0.2)	(0.1)	-	-	(0.7)
<b>Net deferred tax assets/(liabilities) as at 31 December</b>	<b>(78.7)</b>	<b>1.9</b>	<b>3.6</b>	<b>0.5</b>	<b>18.2</b>	<b>(54.5)</b>
Classified as follows:						28.5
Deferred tax asset as at 31 December						83.0
Deferred tax liability as at 31 December						

2019						
EURm	Intangible assets	Plant & equipment	Other accruals	Employee benefits obligation	Deferred tax losses carried forward	Total
<b>Development in deferred income tax assets and liabilities</b>						
Net deferred tax assets/(liabilities) as at 1 January	(80.2)	4.1	(0.5)	0.8	37.0	(38.8)
Deferred tax on items transferred to assets held for sale	22.3	-	-	-	-	22.3
Additions from acquisitions	(11.7)	-	(0.1)	-	-	(11.8)
Deferred tax on result for the year	8.5	(1.3)	1.2	(0.1)	(23.1)	(14.8)
Deferred tax on result for the year on discontinued activities	-	-	-	-	(11.5)	(11.5)
<b>Net deferred tax assets/(liabilities) as at 31 December</b>	<b>(61.1)</b>	<b>2.8</b>	<b>0.6</b>	<b>0.7</b>	<b>2.4</b>	<b>(54.6)</b>
Classified as follows:						
Deferred tax assets as at 31 December						11.1
Deferred tax liabilities as at 31 December						65.7

**Note 6.2**

## Related party transactions

**RELATED PARTY TRANSACTIONS**

As at 31 December 2020 the Group was 100% owned by Nets Holdco 5 AS. The ultimate parent of the Group is Evergood H&F Lux S.a.r.l. (Luxembourg).

Related parties with significant influence are the Board of Managers, Key Personnel and their related parties. Furthermore, related parties are companies in which the above persons have significant interests, as well as associates of the Group. All transactions with related parties are made on arm's length terms except the pre-

ferred equity certificates as described in Note 5.2 and 7.1.

Transactions with associated companies, comprise mainly administrative services amounting to EUR 5.1 million.

There were no transactions with members of the Board of Managers and other Key Personnel, other than remuneration, and furthermore, no loans were granted to the Board of Managers or other Key Personnel in 2020.

**MANAGERS AND KEY PERSONNEL**

Short-term benefits included fixed-base salary and accrued cash bonuses designed to incentivise individual performance and the achievement of a number of predefined short-term functional and individual business targets linked to goals in the Group's balanced scorecard.

At year-end 2020, Key Personnel consisted of eight members (2019: eight members).

Certain employees of the Group participate in a management equity programme which allows them to acquire shares in Nets TopCo 1 S.à r.l. The investment was made at fair market value at the time of investment in the programme and therefore no benefit, hence, there is no expenditure and therefore no effect on either the balance sheet or on the income statement of the Group.

**REMUNERATION OF THE BOARD OF**

EURm	2020			2019		
	Board of Managers	Key Personnel*	Total	Board of Managers	Key Personnel*	Total
Fixed base salary	(0.1)	(2.5)	(2.6)	(0.1)	(2.5)	(2.6)
Bonus including termination bonus and sign-on fee (2019)	-	(2.0)	(2.0)	-	(4.7)	(4.7)
Pensions	-	(0.3)	(0.3)	-	(0.3)	(0.3)
Benefits	-	(0.2)	(0.2)	-	(0.2)	(0.2)
<b>Total remuneration</b>	<b>(0.1)</b>	<b>(5.0)</b>	<b>(5.1)</b>	<b>(0.1)</b>	<b>(7.7)</b>	<b>(7.8)</b>

\* Includes Key Personnel that is part of the discontinued operations.

**Note 6.3**

## Share-based payment

**Accounting policies**

The all Employee Share programme (2019) is accounted for on an accrual basis over the vesting period. Employee Share programme has been measured at the fair value of the Nets Group at the launch date of the programme times the probability of vesting. Share options issued were measured at fair value at the date of granting times the probability of vesting. The total amount expensed over the vesting period is determined by reference to the value of the shares and options granted, excluding the impact of any non-market vesting conditions. The value was fixed at grant date. Non-marked vesting conditions is included in assumptions about the number of shares and options that is expected to vest. Any impact of adjustments to estimates is recognised in the income statement and in a corresponding adjustment to Equity over the remaining vesting period. Adjustments relating to prior years are included in the income statement in the year of adjustment.

**EMPLOYEE SHARE PROGRAMME**

In August 2019 an all Employee share program was announced with the purpose of giving all employees of the Nets Group the opportunity to become co-owners of the Nets Group. Under the program employees could invest in the Nets Group and have their investment matched with two free shares if participating employees are employed when the Nets Group is either sold or if its shares are offered in an initial Public Offering. The matching shares were granted at 13 December 2019 and were expected to vest 36 months from grant date. The total value of the programme at grant date amounts to EUR 4.5 million. In connection with the Nexi transaction a change of control clause will be triggered and the remaining value of the programme will be recognised in the period until expected closing. The cost recognised in 2020 amounts to EUR 1.5 million (2019: 0.1 million).

**Note 6.4**

## Fee to statutory auditors

EURm	2020	2019
<b>Remuneration to Auditors (PwC as elected by the Annual General Meeting)</b>		
<b>Statutory audit</b>	<b>(1.0)</b>	<b>(1.0)</b>
Non-statutory audit services:		
Other assurance engagements	(0.9)	(0.3)
Tax advisory services	-	(0.1)
Other services	(0.5)	(1.6)
<b>Total non-statutory audit services</b>	<b>(1.4)</b>	<b>(2.0)</b>
<b>Total</b>	<b>(2.4)</b>	<b>(3.0)</b>

The fee for services other than the statutory audit of the financial statements provided by several PwC member firms to the Group consists

of services related to Mergers & Acquisitions, business optimisation, and other accounting and tax services including IT.

**Section 7:**

# Other disclosures

Included in this section are disclosures which are material to the financial statements from either a quantitative or a qualitative perspective, but which do not directly relate to a specific theme section.

**In this section**

7.1	Pension assets and pension obligations, net	68
7.2	Classification of financial assets and financial liabilities	70
7.3	Standards issued but not yet effective	71
7.4	Events after the balance sheet date	71
7.5	Companies in the Group	72
7.6	Financial definitions	73

**Note 7.1**

## Pension assets and pension obligations, net

**Significant accounting policies****PENSIONS**

The Group has entered into defined benefit plans and defined contribution plans with its employees.

In a defined benefit plan, the Group is obliged to pay a specific benefit to certain employees from the time of retirement. A pension asset or pension obligation corresponding to the present value of the obligations less the defined pension plan's assets at fair value is recognised for these benefit plans.

The costs of providing benefits under the defined benefit plan are determined annually by independent actuaries using the projected unit credit method.

The defined pension plans' assets are estimated at fair value at the balance sheet date.

Remeasurements, comprising actuarial gains and losses, the effect of the asset ceiling, excluding amounts included in net interest on the net defined benefit liability and the return on plan assets (excluding amounts included in net interest on the net defined benefit liability), are recognised immediately in the statement of financial position with a corresponding debit or credit to retained earnings through OCI in the period in which they occur.

Remeasurements are not reclassified to profit or loss in subsequent periods.

Pension assets recognised are limited to the present value of future repayments from the pension plan or reduced future funding commitments. To calculate the present value of economic benefits, consideration is given to any applicable minimum funding requirements.

In case of changes in benefits relating to employees' previous service period, a change in the estimated present value of the pension obligations will occur, which will be recognised immediately if the employees have acquired a final right to the changed benefits. If not, the change is recognised over the period in which the employees become entitled to the changed benefit.

Net periodic pension income/(cost) from defined benefit plans consist of: Service costs, interest expenses and interest income on assets. Service costs are recognised in wages, salaries and pension costs. Interest expenses and interest income on assets, net, are recognised in pension costs.

For the defined contribution plans, the Group will pay in a fixed periodic contribution to separate legal entities and will have no further obligations after the payment has been made.

Costs regarding defined contribution plans are recognised as incurred within staff costs.

**Note 7.1****Pension assets and pension obligations, net** (continued)**Key accounting estimates and judgements****DEFINED BENEFIT PENSION PLANS**

The Group has defined benefit pension plans mainly in Norway. The defined benefit plans have been closed. Employees covered by the plans will continue to be entitled to the pension payments earned however, employees will not earn further pension payments and no new members are entering into the agreements.

The pension obligation costs for defined benefit plans are estimated based on certain actuarial assumptions, the most significant of which relate to returns on plan assets, discount rate, wage inflation and demography (mortality, disability etc.). The assumed discount rate may fluctuate significantly. We believe the assumptions used in the actuarial valuation illustrate current market conditions and expectations for market returns in the long term. Even modest changes to the actuarial assumptions may result in significant changes to the pension liability.

EURm	2020	2019
<b>Assets and obligations</b>		
<b>Specification of pensions</b>		
Fair value of plan assets	6.2	6.5
Projected benefit obligations	(10.2)	(10.5)
<b>Pension assets/(obligations) recognised in the balance sheet</b>	<b>(4.0)</b>	<b>(4.0)</b>
<b>Change in pension assets/(obligations) recognised in the balance sheet</b>		
Pension assets/(obligations) recognised in the balance sheets as at 1 January	(4.0)	(5.2)
Additions from acquisitions	(0.2)	(0.2)
Pension (costs)/income recognised in the income statement	(0.2)	(0.4)
Actuarial gain/(loss) on projected benefit obligations and plan assets recognised in Other comprehensive income	(0.3)	0.2
Gain on plan assets	0.1	0.1
Nets' contribution	0.2	0.5
Benefit paid to employees	-	0.1
Gain from transfer of employees to external part	-	0.2
Settlement/Curtailment	0.3	-
Currency translation adjustment	0.1	-
Reclassification to liabilities held-for-sale	-	0.7
<b>Pension assets/(obligations) recognised in the balance sheet as at 31 December</b>	<b>(4.0)</b>	<b>(4.0)</b>

Assumptions	2020		2019			
	2020	2019	Sensitivity +1 %-point (1 %-point)	Sensitivity +1 %-point (1 %-point)		
Discount rate	1.7%	2.3%	(1.9)	2.0	(1.4)	1.6
General wage inflation	2.3%	2.3%	0.1	(0.1)	0.2	(0.2)
Expected regulation of minimum payment	1.5%	1.5%	1.0	(1.1)	1.3	(1.2)

The assumptions used for the actuarial valuation of the pension obligation are based on regularly used assumptions within insurance for demographic factors. The Group has used a mortality rate in accordance with the Norwegian K2013 table.

The table above shows the estimated impact of some of the risks that the Group is exposed to.

The Group is also exposed to fluctuations in the market value of assets. For some of these risks, if the defined benefit obligation rises or falls, the market value of assets may move in the opposite direction, thereby eliminating part of the risk.

EURm	2020	2019
<b>Expected maturity of projected benefit obligations</b>		
Within 1 year	(0.8)	(0.5)
1–5 years	(2.1)	(2.9)
Beyond 5 years	(7.3)	(7.1)
<b>Total</b>	<b>(10.2)</b>	<b>(10.5)</b>

**Note 7.2****Classification of financial assets and financial liabilities****FAIR VALUE MEASUREMENT HIERARCHY**

The carrying values and fair values are identical, except for bank loans measured at amortised cost. Refer to Note 5.2 for carrying amounts and nominal value of bank loans. Fair value of bank loans is assumed to be similar to the nominal value.

**THE METHODS AND ASSUMPTIONS ARE AS FOLLOWS:**

- the fair value of financial assets and liabilities traded in active markets is based on quoted

- market prices as at the balance sheet date (Level 1).
- the fair value of financial assets and liabilities is based on inputs other than quoted prices included in Level 1 that are observable either directly or indirectly i.e. floating rate bank loans (Level 2).

- the fair value of financial assets and liabilities which are highly liquid and have a short duration is estimated to have a fair value that is identical with the book value (Level 3).

	2020		
EURm	Financial assets and liabilities measured at fair value	Financial assets and liabilities measured at amortised cost	Total
<b>Financial assets and liabilities</b>			
Trade and other receivables	-	148.1	148.1
Contract assets	-	27.7	27.7
Settlement assets	-	461.8	461.8
Receivables from Group enterprises	-	82.4	82.4
Cash at bank and on hand	-	189.7	189.7
Other financial assets <sup>3</sup>	9.0	-	9.0
<b>Total financial assets</b>	<b>9.0</b>	<b>909.7</b>	<b>918.7</b>
Borrowings	-	(401.4)	(401.4)
Liabilities to Group enterprises	-	(1,046.2)	(1,046.2)
Bank overdraft	-	(8.0)	(8.0)
Trade and other payables	-	(307.7)	(307.7)
Contract liabilities	-	(4.2)	(4.2)
Merchant creditors	-	(450.5)	(450.5)
Settlement obligations	-	(127.0)	(127.0)
Other liabilities <sup>2,4</sup>	(345.4)	-	(345.4)
Lease liabilities	-	(73.4)	(73.4)
Other financial liabilities <sup>1</sup>	(1.1)	-	(1.1)
<b>Total financial liabilities</b>	<b>(346.5)</b>	<b>(2,418.4)</b>	<b>(2,764.9)</b>
<b>Total net financial assets/(liabilities)</b>	<b>(337.5)</b>	<b>(1,508.7)</b>	<b>(1,846.2)</b>

<sup>1</sup> Level 1 in the fair value hierarchy.

<sup>2</sup> Level 3 in the fair value hierarchy. The valuation is based on expected future cash flows discounted to its present value.

<sup>3</sup> Level 3 in the fair value hierarchy. Ownership in VN Norge AS is considered to be a financial asset in line with shares and other securities. The valuation is based on input from VN Norge AS.

<sup>4</sup> Level 2 in the fair value hierarchy.

	2019		
EURm	Financial assets and liabilities measured at fair value	Financial assets and liabilities measured at amortised cost	Total
<b>Financial assets and liabilities</b>			
Trade and other receivables	-	121.0	121.0
Contract assets	-	10.5	10.5
Settlement assets	-	707.5	707.5
Receivables from Group enterprises	-	61.0	61.0
Cash at bank and on hand	-	153.5	153.5
Other financial assets <sup>3</sup>	15.8	-	15.8
<b>Total financial assets</b>	<b>15.8</b>	<b>1,053.5</b>	<b>1,069.3</b>
Borrowings	-	(325.3)	(325.3)
Liabilities to Group enterprises	-	(752.2)	(752.2)
Bank overdraft	-	(17.5)	(17.5)
Trade and other payables	-	(216.0)	(216.0)
Contract liabilities	-	(6.9)	(6.9)
Merchant creditors	-	(574.5)	(574.5)
Settlement obligations	-	(236.2)	(236.2)
Other liabilities <sup>2,4</sup>	(162.8)	-	(162.8)
Lease liabilities	-	(86.4)	(86.4)
Other financial liabilities <sup>1</sup>	(1.4)	-	(1.4)
<b>Total financial liabilities</b>	<b>(164.2)</b>	<b>(2,215.0)</b>	<b>(2,379.2)</b>
<b>Total net financial assets/(liabilities)</b>	<b>(148.4)</b>	<b>(1,161.5)</b>	<b>(1,309.9)</b>

<sup>1</sup> Level 1 in the fair value hierarchy.

<sup>2</sup> Level 3 in the fair value hierarchy. The valuation is based on expected future cash flows discounted to its present value.

<sup>3</sup> Level 3 in the fair value hierarchy. Ownership in VN Norge AS is considered to be a financial asset in line with shares and other securities. The valuation is based on input from VN Norge AS.

<sup>4</sup> Level 2 in the fair value hierarchy.

**Note 7.3**

## Standards issued but not yet effective

The standards and interpretations which have been issued, but are not yet effective, up to the date of issuance of the Group's financial statements, and which are considered to have an effect on the Group, are disclosed below.

New standards and amendments which are not yet effective and which are not considered to have an impact on the Group are not disclosed. The Group intends to adopt these standards, if applicable, when they become effective.

Currently there are no new standards, amendments and interpretations which have been adopted by the IASB and adopted by the EU, which are relevant to Nets.

**Note 7.4**

## Events after the balance sheet date

In January 2021, Nets announced the acquisitions of Checkout Finland Oy a rapidly growing company within eCommerce. For additional information.

In March 2021, the sale of Nets' account-to-account payment business to Mastercard for EUR 2.85 billion was completed upon receipt of all regulatory approvals and fulfilment of all customary closing conditions.

**Note 7.5****Companies in the Group**

Company	Structure	Currency	Ownership	Company	Structure	Currency	Ownership
<b>Parent company</b>				<b>Finland</b>			
Nets A/S				Paytrail Oyj	Subsidiary	EUR	100%
<b>Denmark</b>				Paytrail Technology Oy	Subsidiary	EUR	100%
Nassa A/S	Subsidiary	DKK	100%	Poplatek Oy	Subsidiary	EUR	100%
Nets Holding A/S	Subsidiary	DKK	100%	Poplatek Payments Oy	Subsidiary	EUR	100%
Nets Denmark A/S	Subsidiary	DKK	100%	<b>Estonia</b>			
Nets DanID A/S	Subsidiary	DKK	100%	Nets Estonia AS	Subsidiary	EUR	100%
Nets Cards Processing A/S	Subsidiary	DKK	100%	ITP Baltic SIA (Estonia)	Subsidiary	EUR	100%
Storebox ApS	Subsidiary	DKK	100%	<b>Poland</b>			
Signaturgruppen A/S	Subsidiary	DKK	100%	P24 Dotcard Sp. z o.o.	Subsidiary	PLN	51%
e-Boks A/S	Associate	DKK	50%	PayPro S.A.	Subsidiary	PLN	51%
Centurion DK A/S	Subsidiary	DKK	100%	eCard S.A.	Subsidiary	PLN	51%
<b>Norway</b>				Dotpay Sp. z o.o.	Subsidiary	PLN	51%
Nassa Topco AS	Subsidiary	NOK	100%	Dotpay Polska Sp. z o.o.	Subsidiary	PLN	51%
Nets Norge Infrastruktur AS	Subsidiary	NOK	100%	Rementi Investments S.A.	Subsidiary	PLN	100%
EDIGard AS	Subsidiary	NOK	100%	Centrum Rozliczen Elektronicznych Polskie ePlatnosci S.A.	Subsidiary	PLN	100%
e-Boks AS	Associate	NOK	50%	PayLane Sp. z o.o.	Subsidiary	PLN	100%
Centurion NO AS	Subsidiary	NOK	100%	BillBird S.A.	Subsidiary	PLN	100%
Centurion NNI AS	Subsidiary	NOK	100%	TopCard Sp. z o.o.	Subsidiary	PLN	100%
<b>Sweden</b>							
Nets Sweden AB	Subsidiary	SEK	100%				
Nassa Bidco AB	Subsidiary	SEK	100%				
Nets Spectracard AB	Subsidiary	SEK	100%				
e-Boks Sverige AB	Associate	SEK	50%				



**Note 7.6****Financial definitions**

Key figures and financial ratios stated in the consolidated financial statements have been calculated as follows:

<b>Growth in revenue, reported</b>	Absolute revenue growth / Revenue in comparative period
<b>Growth in revenue, organic</b>	Organic growth is a measure of growth excluding the impact of acquisitions, divestments and foreign exchange adjustments from year-on-year comparisons
<b>EBITDA b.s.i. *</b>	EBITDA before special items
<b>EBITDA before special items margin, % *</b>	EBITDA before special items / Net revenue
<b>Special items *</b>	As defined in Note 2.2
<b>EBITDA *</b>	Earnings before interest, tax, depreciation, amortisation and impairment losses
<b>Underlying depreciation and amortisation</b>	Depreciation & amortisation adjusted for amortisation of business combination intangibles & impairment losses
<b>Adjusted EBIT *</b>	EBITDA before special items and adjusted for underlying depreciation and amortisation
<b>EBIT</b>	Earnings before interest and tax (operating profit)
<b>Capital expenditure (CAPEX)</b>	Purchase of intangible assets and plant & equipment and capitalised development projects for the year, excluding acquisition of subsidiaries

<b>Cash flow from operating activities excl. clearing-related balances</b>	Operating cash flow excluding clearing-related cash flow
<b>Narrow working capital</b>	As defined in Section 3
<b>Operating free cash flow</b>	Cash flow from EBITDA adjusted for change in narrow working capital and CAPEX
<b>Own cash</b>	Cash and cash equivalents excluding clearing-related balances and other proceeds received in cash to be passed through
<b>Net interest bearing debt (NIBD)</b>	Interest bearing debt net of own cash and clearing-related borrowings
<b>Cash conversion ratio</b>	Operating free cash flow adjusted for special items / EBITDA before special items
<b>Clearing-related balances</b>	As defined in Section 3
<b>Equity ratio</b>	Equity of the Group / Total assets

\*This key figure, ratio or element thereof is a non-IFRS financial measure.

**Financial statements****Parent Company****In this section**

<b>Note 1</b>	Accounting policies	76
<b>Note 2</b>	Revenue	77
<b>Note 3</b>	Staff costs	77
<b>Note 4</b>	Net financials	77
<b>Note 5</b>	Intangible assets	77
<b>Note 6</b>	Investment in subsidiaries	78
<b>Note 7</b>	Trade and other payables	78
<b>Note 8</b>	Contingent liabilities	78
<b>Note 9</b>	Related party transactions	78

**Income statement for the Parent Company**

EURm	Note	2020	2019
Revenue	2	0.9	0.7
External expenses		(30.3)	(9.1)
Staff costs	3	(4.5)	(3.6)
Amortisation	5	(12.0)	-
<b>Operating result (EBIT)</b>		<b>(45.9)</b>	<b>(12.0)</b>
Dividend from subsidiaries		54.2	-
Financial income	4	0.3	0.2
Financial expenses	4	(3.8)	(0.1)
<b>Net financials</b>		<b>50.7</b>	<b>0.1</b>
<b>Result before tax</b>		<b>4.8</b>	<b>(11.9)</b>
Income taxes		5.5	(0.7)
<b>Result for the year</b>		<b>10.3</b>	<b>(12.6)</b>
<b>Proposed appropriation of result</b>			
Retained earnings		10.3	(12.6)
<b>Total appropriation</b>		<b>10.3</b>	<b>(12.6)</b>

## Balance sheet for the Parent Company

EURm	Note	2020	2019
<b>Assets</b>			
<b>Non-current assets</b>			
Other intangible assets	5	62.6	60.0
Deferred tax assets		-	0.4
Investment in subsidiaries	6	1,437.4	1,431.5
<b>Total non-current assets</b>		<b>1,500.0</b>	<b>1,491.9</b>
<b>Current assets</b>			
Prepayments		0.1	0.1
Receivables from Group enterprises		65.3	11.2
Current tax receivables		19.5	-
Cash and cash equivalents		1.7	1.2
<b>Total current assets</b>		<b>86.6</b>	<b>12.5</b>
<b>Total assets</b>		<b>1,586.6</b>	<b>1,504.4</b>

EURm	Note	2020	2019
<b>Equity and liabilities</b>			
<b>Equity</b>			
Share capital		26.9	26.9
Reserves		1,362.1	1,344.3
<b>Total equity</b>		<b>1,389.0</b>	<b>1,371.2</b>
<b>Non-current liabilities</b>			
Deferred tax liabilities		13.8	-
<b>Total non-current liabilities</b>		<b>13.8</b>	<b>-</b>
<b>Current liabilities</b>			
Trade and other payables	7	33.7	15.4
Current tax liabilities		-	0.4
Payables to Group enterprises		150.1	117.4
<b>Total current liabilities</b>		<b>183.8</b>	<b>133.2</b>
<b>Total liabilities</b>		<b>197.6</b>	<b>133.2</b>
<b>Total equity and liabilities</b>		<b>1,586.6</b>	<b>1,504.4</b>

## Statement of changes in equity for the Parent Company

EURm	Share capital	Currency translation reserve	Retained earnings	Total equity
<b>2020</b>				
Equity as at 1 January	26.9	-	1,344.3	<b>1,371.2</b>
Net result for the year	-	-	10.3	<b>10.3</b>
Currency translation adjustment	-	6.0	-	<b>6.0</b>
Share based payment	-	-	1.5	<b>1.5</b>
<b>Total changes in equity</b>	<b>-</b>	<b>6.0</b>	<b>11.8</b>	<b>17.8</b>
<b>Equity as at 31 December</b>	<b>26.9</b>	<b>6.0</b>	<b>1,356.1</b>	<b>1,389.0</b>
<b>2019</b>				
Equity as at 1 January	26.9	-	1,296.6	<b>1,323.5</b>
Net result for the year	-	-	(12.6)	<b>(12.6)</b>
Currency translation adjustment	-	-	(0.7)	<b>(0.7)</b>
Received Group contribution	-	-	61.0	<b>61.0</b>
<b>Total changes in equity</b>	<b>-</b>	<b>-</b>	<b>47.7</b>	<b>47.7</b>
<b>Equity as at 31 December</b>	<b>26.9</b>	<b>-</b>	<b>1,344.3</b>	<b>1,371.2</b>

### Note 1

## Accounting policies

The financial statements of the Parent Company have been prepared in accordance with the Danish Financial Statements Act (Class medium-sized C).

The accounting policies for the financial statements of the Parent Company are the same as for the consolidated financial statements with the additions described below. For a description of the accounting policies of the Group, please refer to Section 1 in the consolidated financial statements.

### SUPPLEMENTARY ACCOUNTING POLICIES FOR THE PARENT COMPANY

#### Financial assets

In the financial statements of the Parent Company, investment in subsidiaries and associated companies are recorded at their acquisition cost. The recognised value is adjusted only if the recognised value of the investment exceeds the recoverable amount.

Dividend or other direct payments received from subsidiaries or associates are recognised as income from financing and investing activities and presented in the income statement.

Fair value of share options issued to employees of the subsidiaries of Nets A/S is accounted for as a capital contribution over the vesting period, whereby it is recorded as an addition during the year. Payments received from subsidiaries to compensate Nets A/S upon an employee's exercise of share options are, conversely, deducted from the accumulated cost of investments in subsidiaries.

#### TAX

For Danish tax purposes, all Danish entities are assessed jointly. The Danish jointly taxed companies are included in a Danish on-account tax payment scheme for Danish corporate income tax. All current taxes under the scheme are recorded in the individual companies.

#### STATEMENT OF CASH FLOWS

No separate statement of cash flows has been prepared for the Parent Company; please refer to the consolidated statement of cash flows.

**Note 2****Revenue**

EURm	2020	2019
Group services (Wages and salaries etc)	0.9	0.7
<b>Total</b>	<b>0.9</b>	<b>0.7</b>

**Note 3****Staff costs**

EURm	2020	2019
<b>Staff costs</b>		
Wages and salaries	(1.4)	(1.4)
Bonus	(1.3)	(1.9)
Share-based payment costs	(1.5)	-
Pensions - defined contribution plans	(0.1)	(0.2)
Other employee costs	(0.2)	(0.1)
<b>Total employee costs for the year</b>	<b>(4.5)</b>	<b>(3.6)</b>
Average number of full-time employees	2	2
Year-end number of full-time employees	2	2

For information regarding remuneration of the Board of Directors and the Executive Management, please refer to Note 6.2 in the consolidated financial statements.

For information regarding share-based payment, please refer to Note 6.3 in the consolidated financial statements.

**Note 4****Net financials**

EURm	2020	2019
<b>Financial income</b>		
Interest income from Group enterprises	0.3	0.2
<b>Total financial income</b>	<b>0.3</b>	<b>0.2</b>
<b>Financial expenses</b>		
Interest expenses to Group enterprises	(3.5)	0.0
Other fees etc.	(0.3)	(0.1)
<b>Total financial expenses</b>	<b>(3.8)</b>	<b>(0.1)</b>

**Note 5****Intangible assets**

2020	Other intangible assets	
	Software	Other intangible assets
EURm		
Accumulated cost as at 1 January	60.0	60.0
Additions	14.4	14.4
Currency translation adjustment	0.2	0.2
<b>Accumulated cost as at 31 December</b>	<b>74.6</b>	<b>74.6</b>
Amortisation	(12.0)	(12.0)
<b>Accumulated amortisation and write-down for impairment as at 31 December</b>	<b>(12.0)</b>	<b>(12.0)</b>
<b>Carrying amount as at 31 December</b>	<b>62.6</b>	<b>62.6</b>

**Note 6****Investment in subsidiaries**

EURm	2020	2019
<b>Investment in subsidiaries</b>		
Accumulated cost as at 1 January	1,423.5	1,362.5
Addition during the year	-	61.0
<b>Accumulated cost as at 31 December</b>	<b>1,423.5</b>	<b>1,423.5</b>
Revaluation as at 1 January	8.0	8.4
Currency translation adjustment	5.9	(0.4)
<b>Revaluation as at 31 December</b>	<b>13.9</b>	<b>8.0</b>
<b>Carrying amount at 31 December</b>	<b>1,437.4</b>	<b>1,431.5</b>

EURm					
Company name	Share	Currency	Annual report	Equity	Profit for the year
Nassa Topco AS	100%	DKK	2019	11,992	495
<b>Total</b>				<b>11,992</b>	<b>495</b>

**Note 7****Trade and other payables**

EURm	2020	2019
Employee cost payable	1.1	2.0
Trade payables	32.6	13.4
<b>Total</b>	<b>33.7</b>	<b>15.4</b>

**Note 8****Contingent liabilities**

Nets A/S and its Danish subsidiaries are jointly taxed with the Danish companies in the Nets A/S Group. The joint taxation also covers withholding taxes in the form of dividend tax, royalty tax and interest tax. The Danish companies are jointly and individually liable for the joint taxation. Any subsequent adjustments to income taxes and withholding taxes may lead

to a larger liability. The taxes for the individual companies are allocated in full on the basis of the expected taxable income.

For information on pending litigation and other contingencies, please refer to Note 5.7 in the consolidated financial statements.

**Note 9****Related party transactions**

For information on transactions with related parties, please refer to Note 6.2 in the consolidated financial statements.

# Glossary\*

**Acceptance** – a service that allows merchants to accept card payments

**Acquiring services (merchant acquiring)** – the act of handling credit or debit card payments on behalf of a merchant

**Artificial intelligence (AI)** – intelligence exhibited by machines

**Authentication** – the process of recognising a user's identity

**Avtalegiro** – a service offered by Nets in Norway for automatic invoicing and payment of recurring bills

**BankAxept** – a domestic payment scheme owned by Norwegian banks. Nets operates the common operating infrastructure for BankAxept's debit card

**BankID** – a digital identity solution in Norway operated by Nets on behalf of banks

**Betalingservice** – a direct debit solution offered by Nets to Danish corporates and their customers

**Biometrics** – metrics related to human characteristics, such as fingerprint, iris and face recognition or behavioural patterns such as typing patterns, used a.o. for access control

**Blockchain** – a distributed ledger technology / decentral database

**Clearing** – the process of reconciliation of orders between transacting parties

**CMS** – Consumer Management Services

**Contactless transactions** – payment card transactions carried out in-store without the consumer having to insert their card into a terminal or enter their PIN

**Dankort** – the Danish domestic debit card owned and operated by Nets

**Digital identity** – information on an entity used by computer systems to represent an external agent. That agent may be a person, organisation, application, or device

**Digital login** – login details to log on to a digital mailbox or similar

**Direct debit payment** – (Betalingservice) an instruction from a consumer to their bank, authorising the receiver, usually a corporate, to collect varying amounts from the consumer's account, provided the account holder has been given advanced notice of the amount and date of collection

**e-commerce (electronic commerce)** – a transaction of buying or selling online

**eFaktura** – Nets' Norwegian e-billing service

**Fintech** – Nets and other providers of new solutions which demonstrate innovative devel-

opment of applications, processes, products or business models in the financial services industry

**Fraud & Dispute Services** – card fraud management and dispute handling

**General Data Protection Regulation (GDPR) (Regulation (EU) 2016/679)** – a regulation intended to strengthen and unify data protection for individuals within the EU and which also addresses export of personal data outside the EU

**Instant payments** – refer to 'real-time clearing'

**Internet of Things (IoT)** – machine-to-machine communication. Payment IoT enables automatic payment when objects are linked to the internet

**Issuer processing (front-end processing)** – processing of card-based transactions on behalf of issuing banks

**Malware** – short for 'malicious software'. Software used to disrupt computer or mobile operations, gather sensitive information or gain access to private computer systems

**Merchant acquiring** – refer to 'acquiring services'

**NemID** – a national digital identity solution offered by Nets to Danish citizens, corporates, banks and the public sector on behalf of Digitaliseringsstyrelsen

**Payment processor** – a company appointed by a merchant to handle transactions from various channels such as credit cards and debit cards, front-end and/or back-end

**PCI DSS (The Payment Card Industry Data Security Standard)** – a proprietary information security standard for organisations that handle branded credit cards

**Phishing** – the attempt to obtain sensitive information such as usernames, password, and credit card details by posing as a trustworthy entity in an electronic communication

**Point-of-sale (POS)** – the check-out at a store

**Real-time clearing (RealTime24/7)** – a Nets product allowing instant clearing and settlement of payments

**Robotics** – the use of intelligent computer systems within areas such as fraud prevention and customer service

**Settlement** – the completion of a transaction, wherein the seller transfers securities or financial certificates to the buyer and the buyer transfers money to the seller

\* Terms are explained in the context of this report